



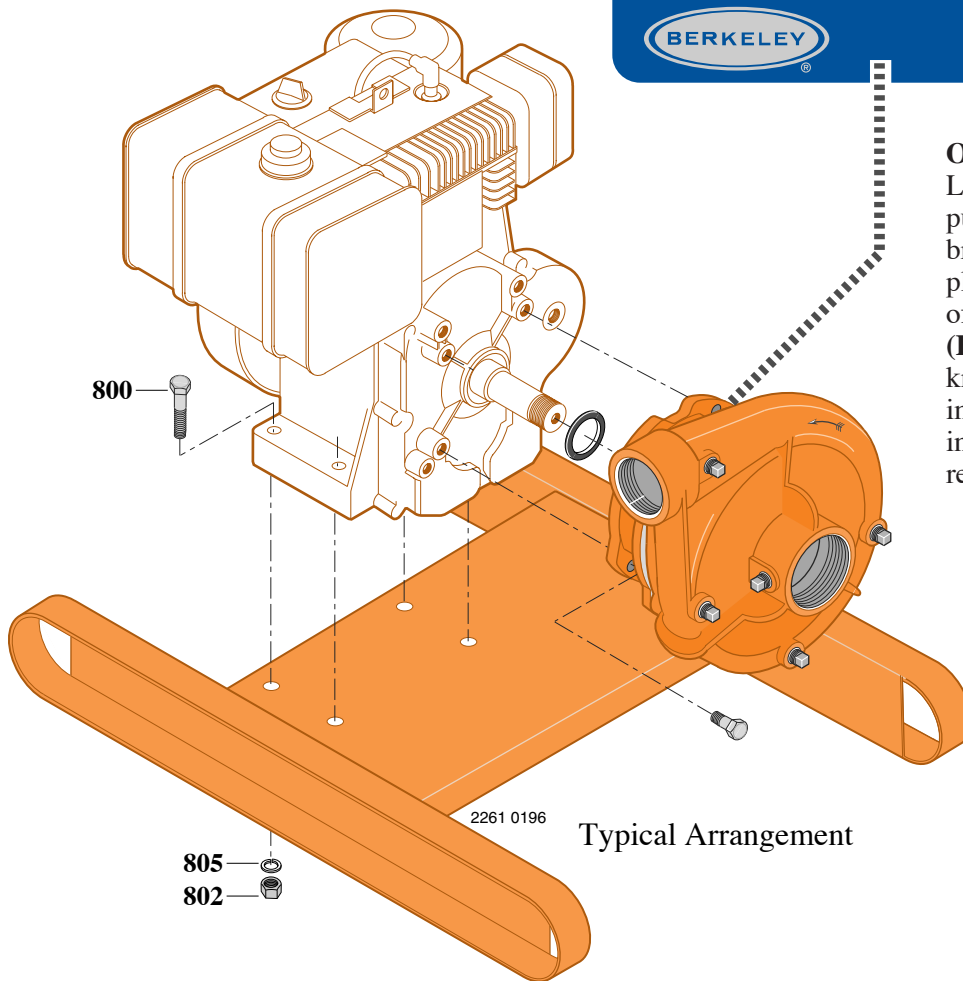
TYPE "B" SINGLE STAGE CENTRIFUGAL PUMP Air Cooled Engine Drive

Section	AC
Supplement	A
Date	January 1, 2004
Supersedes 2/1/96	

SAMPLE ONLY

BERKELEY PUMPS

MODEL B2TQMS-14	S.N. OR DATE G041996
IMPELLER DIA. 6.10"	B.M. B70371



Typical Arrangement

ORDERING INFORMATION

Locate the Berkeley nameplate on the pump which is normally on the motor bracket as shown. Provide all nameplate data when ordering to be sure of receiving correct parts. The **BM (Bill of Material)** number, also known as the catalog number, is most important when calling in for repair instructions, or when ordering replacement parts.

**BASE M10733
BASE S37504
BASE H05248**

Item No.	Part Description	Part Number
800	Capscrew, Hex 5/16-18x1-3/8 (4 Req.)	S26790
802	Nut, Hex 5/16-18 (4 Req.)	S23671
805	Spring Washer, 5/16 (4 Req.)	S23075

BASE S37505

Item No.	Part Description	Part Number
800	Capscrew, Hex 3/8-16x1-1/2 (4 Req.)	S26830
802	Nut, Hex 3/8-16 (4 Req.)	S23103
805	Spring Washer, 3/8 (4 Req.)	S23076

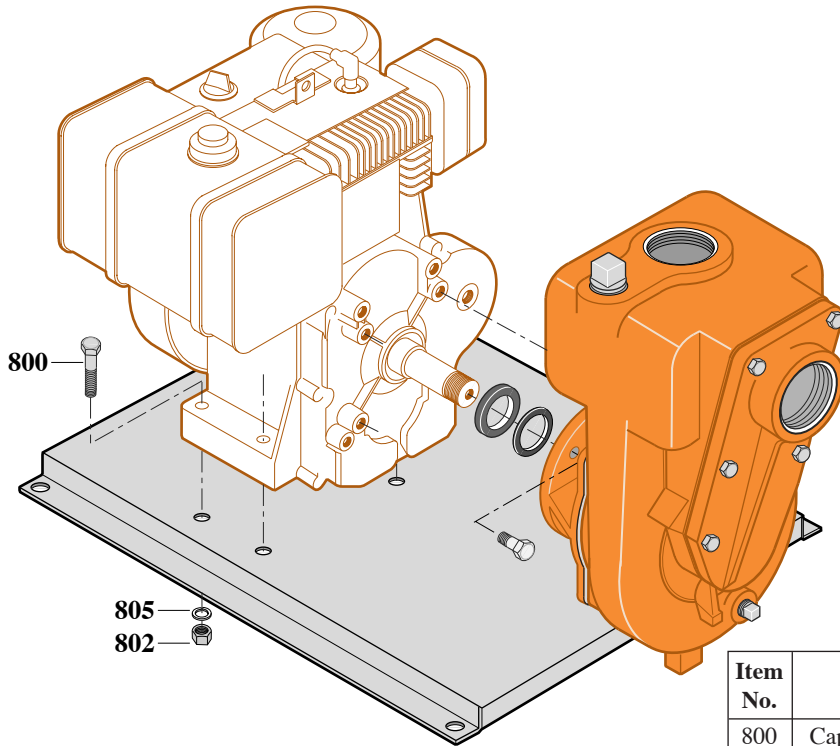
BASE S37521

Item No.	Part Description	Part Number
800	Capscrew, Hex 1/2-13x1 (4 Req.)	S26912
802	Nut, Hex 1/2-13 (4 Req.)	S23107
805	Spring Washer, 1/2 (4 Req.)	S23091



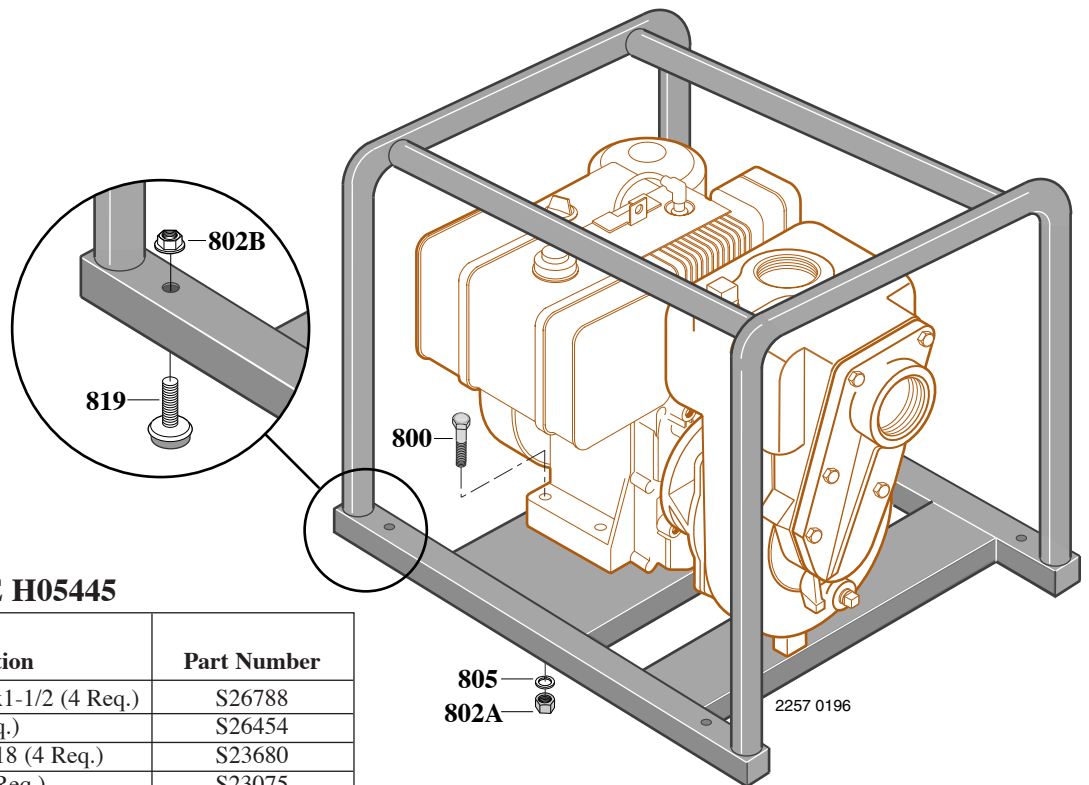
TYPE "B" SINGLE STAGE CENTRIFUGAL PUMP Air Cooled Engine Drive

Section	AC
Supplement	B
Date	January 1, 2004
Supersedes 2/1/96	



BASE L04044

Item No.	Part Description	Part Number
800	Capscrew, Hex 5/16-18x1-1/2 (4 Req.)	S26788
802	Nut, Hex 5/16-18 (4 Req.)	S23671
805	Spring Washer, 5/16 (4 Req.)	S23075



BASE H05445

Item No.	Part Description	Part Number
800	Capscrew, Hex 5/16-18x1-1/2 (4 Req.)	S26788
802A	Nut, Hex 5/16-18 (4 Req.)	S26454
802B	Nut, Hex Flanged 5/16-18 (4 Req.)	S23680
805	Spring Washer, 5/16 (4 Req.)	S23075
819	Foot, Base, Rubber Tipped (4 Req.)	M10800



**TYPE "B" SINGLE STAGE
CENTRIFUGAL PUMP
Air Cooled Engine Drive**

Section	AC
Supplement	C
Date	January 1, 2004
Supersedes 2/1/96	

REPLACEMENT AIR COOLED ENGINES

Model	HP	Engine Manufacturer	Manufacturer's Type No.	Starter	Battery Charger Generator	Fuel Tank	Crankshaft Extension	Catalog Number
EX13	4.5	Robin	Not Applicable	Rewind	Not Applicable	Included 0.70 Gal.	5/8"-18 Threaded	H05331
EX17	6	Robin	Not Applicable	Rewind	Not Applicable	Included 0.95 Gal.	5/8"-18 Threaded	H05330
EX27	9	Robin	Not Applicable	Rewind	Not Applicable	Included 1.59 Gal.	1"-14 Threaded	S30691
EH34	11	Robin	Not Applicable	12 Volt Electric	Included 10 Amp	Included 1.59 Gal.	1"-14 Threaded	H05504
EH41	13.5	Robin	Not Applicable	12 Volt Electric	Included 16 Amp	Included 1.85 Gal.	1"-14 Threaded	H05167
V-Twin	18	Briggs & Stratton Vanguard	Not Applicable	12 Volt Electric	Included 16 Amp	Not Applicable	1"-14 Threaded	H05159



**TYPE "B" SINGLE STAGE
CENTRIFUGAL PUMP
Air Cooled Engine Drive**

Section	AC
Page	10.1
Date	January 1, 2004
Supersedes 2/1/96	

CAST IRON IMPELLER

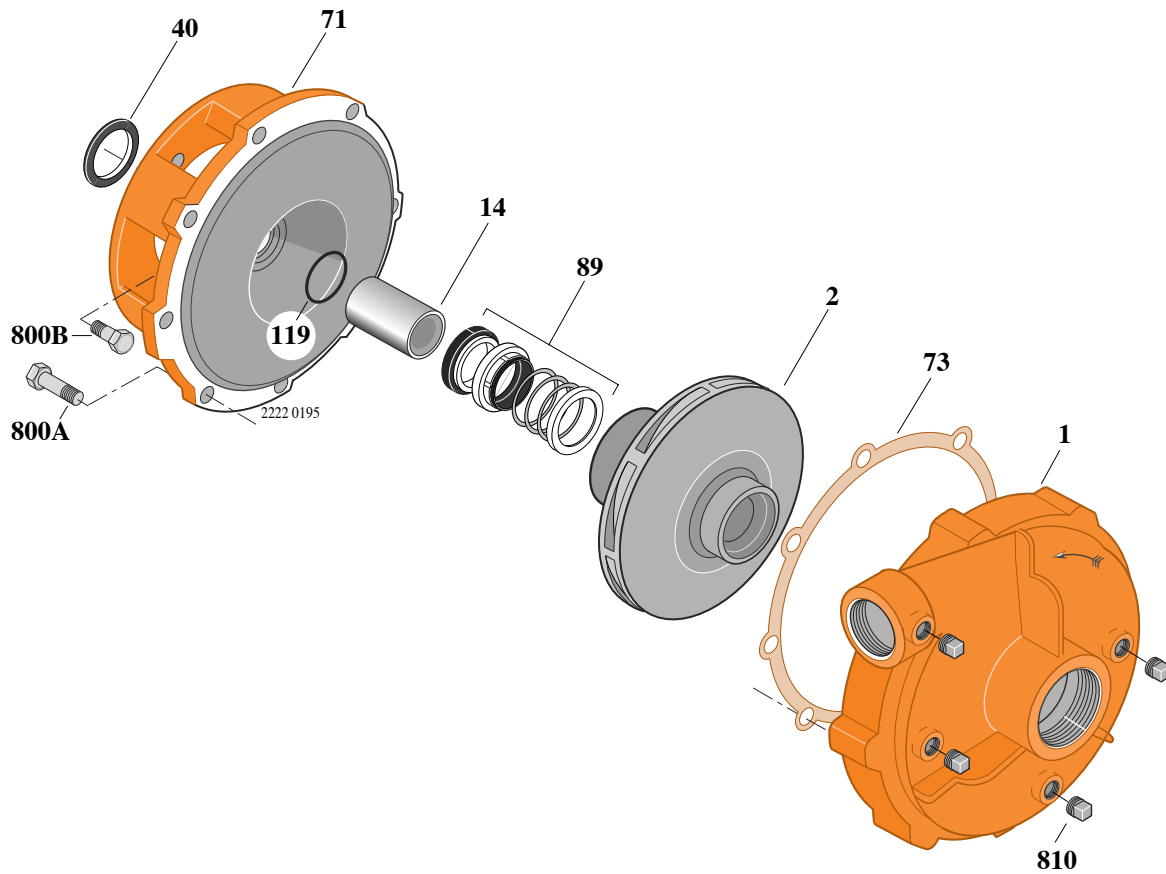
B1WQS-9

Threaded Case (NPT)

Mechanical Seal Construction

TABLE I

B/M No.	HP	Engine Manufacturer	Engine Part No.	Engine Starter	Base Part No.
B72133	9	Robin	M12230	Rewind	M10733



Item No.	Part Description	Part Number
1	Case, Volute	L04022
2	Impeller	M12221
14	Sleeve, Shaft	M10726
40	Slinger, Water	S03893
71	Bracket	L06779
73	Gasket	S05126
89	Seal, Mechanical Shaft	S32013
119	O-Ring	M10728
800A	Capscrew, Hex 3/8-16x1" (8 Req.)	S26826
800B	Capscrew, Hex 5/16-24x3/4" (4 Req.)	S23168
810	Plug, Pipe 1/4 NPT (4 Req.)	S23715

NOTE: Refer to *Supplement A* for base configuration and mounting hardware.



**TYPE "B" SINGLE STAGE
CENTRIFUGAL PUMP
Air Cooled Engine Drive**

Section	AC
Page	30.1
Date	January 1, 2004
Supersedes 2/1/96	

CAST IRON IMPELLER

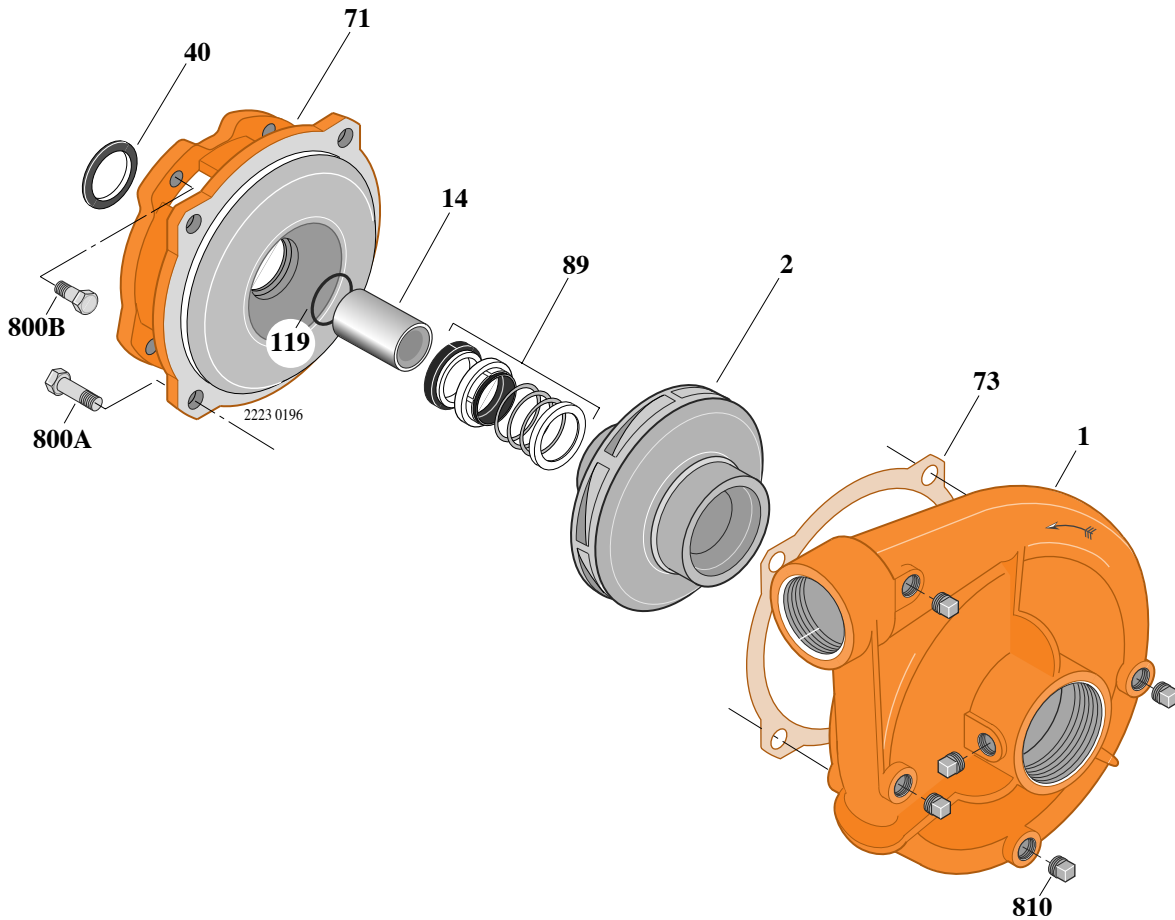
B1-1/2TQMS-9

Threaded Case (NPT)

Mechanical Seal Construction

TABLE I

B/M No.	HP	Engine Manufacturer	Engine Part No.	Engine Starter	Base Part No.
B72136	9	Robin	M12230	Rewind	M12393



Item No.	Part Description	Part Number
1	Case, Volute	L01018
2	Impeller	L07510
14	Sleeve, Shaft	M10731
40	Slinger, Water	S03893
71	Bracket	L01600
73	Gasket	S04757
89	Seal, Mechanical Shaft	S32014
119	O-Ring	M10728
800A	Capscrew, Hex 1/2-13x1" (4 Req.)	S26912
800B	Capscrew, Hex 3/8-16x1" (4 Req.)	S26826
810	Plug, Pipe 1/4 NPT (4 Req.)	S23715

NOTE: Refer to *Supplement A* for base configuration and mounting hardware.



TYPE "B" SINGLE STAGE CENTRIFUGAL PUMP Air Cooled Engine Drive

Section	AC
Page	40.1
Date	January 1, 2004
Supersedes 2/1/96	

CAST IRON IMPELLER

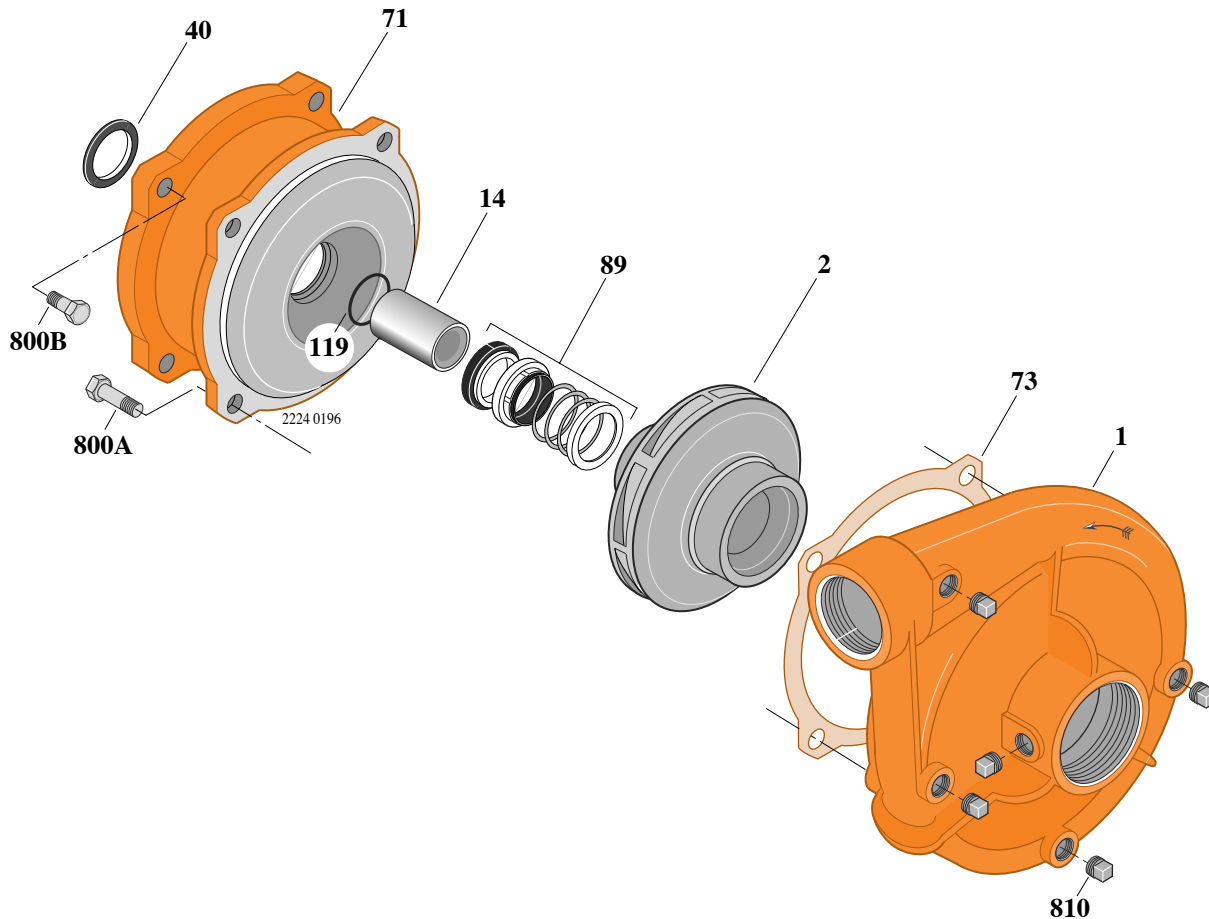
B1-1/2TQMS-11

Threaded Case (NPT)

Mechanical Seal Construction

TABLE I

B/M No.	HP	Engine Manufacturer	Engine Part No.	Engine Starter	Base Part No.
B72599	11	Robin	H05504	Electric	H05766



Item No.	Part Description	Part Number
1	Case, Volute	L01018
2	Impeller	L07985
14	Sleeve, Shaft	M10731
40	Slinger, Water	S03893
71	Bracket	L01600
73	Gasket	S04757
89	Seal, Mechanical Shaft	S32014
119	O-Ring	M10728
800A	Capscrew, Hex 1/2-13x1" (4 Req.)	S26912
800B	Capscrew, Hex 3/8-16x1" (4 Req.)	S26826
810	Plug, Pipe 1/4 NPT (4 Req.)	S23715

NOTE: Refer to *Supplement A* for base configuration and mounting hardware.



**TYPE "B" SINGLE STAGE
CENTRIFUGAL PUMP
Air Cooled Engine Drive**

Section	AC
Page	50.1
Date	January 1, 2004
Supersedes 2/1/96	

CAST IRON IMPELLER

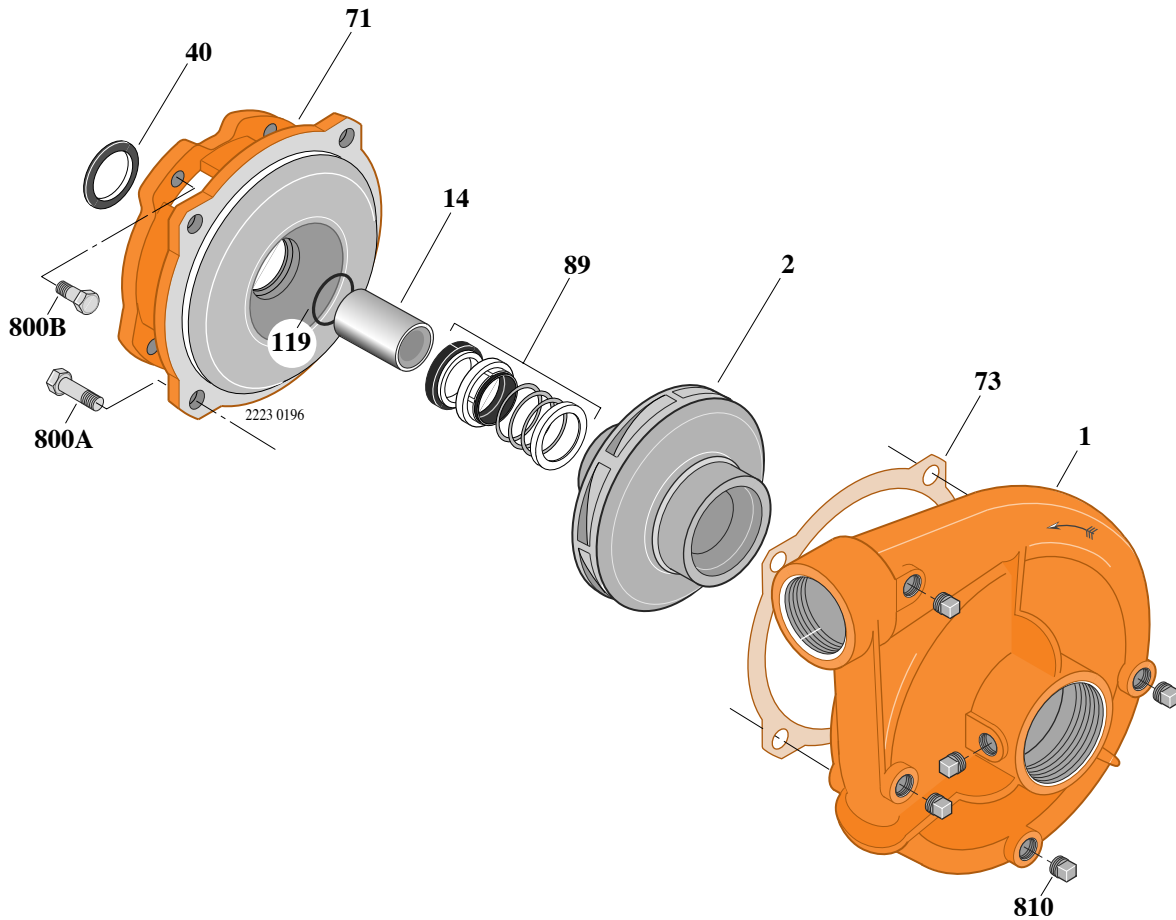
B1-1/2TQMS-14

Threaded Case (NPT)

Mechanical Seal Construction

TABLE I

B/M No.	HP	Engine Manufacturer	Engine Part No.	Engine Starter	Base Part No.
B71146	14	Robin	H05167	Electric	H05248



Item No.	Part Description	Part Number
1	Case, Volute	L01018
2	Impeller	L07511
14	Sleeve, Shaft	M10731
40	Slinger, Water	S03893
71	Bracket	L01600
73	Gasket	S04757
89	Seal, Mechanical Shaft	S32014
119	O-Ring	M10728
800A	Capscrew, Hex 1/2-13x1" (4 Req.)	S26912
800B	Capscrew, Hex 3/8-16x1" (4 Req.)	S26826
810	Plug, Pipe 1/4 NPT (5 Req.)	S23715

NOTE: Refer to *Supplement A* for base configuration and mounting hardware.



**TYPE "B" SINGLE STAGE
CENTRIFUGAL PUMP
Air Cooled Engine Drive**

Section	AC
Page	60.1
Date	January 1, 2004
Supersedes 2/1/96	

CAST IRON IMPELLER

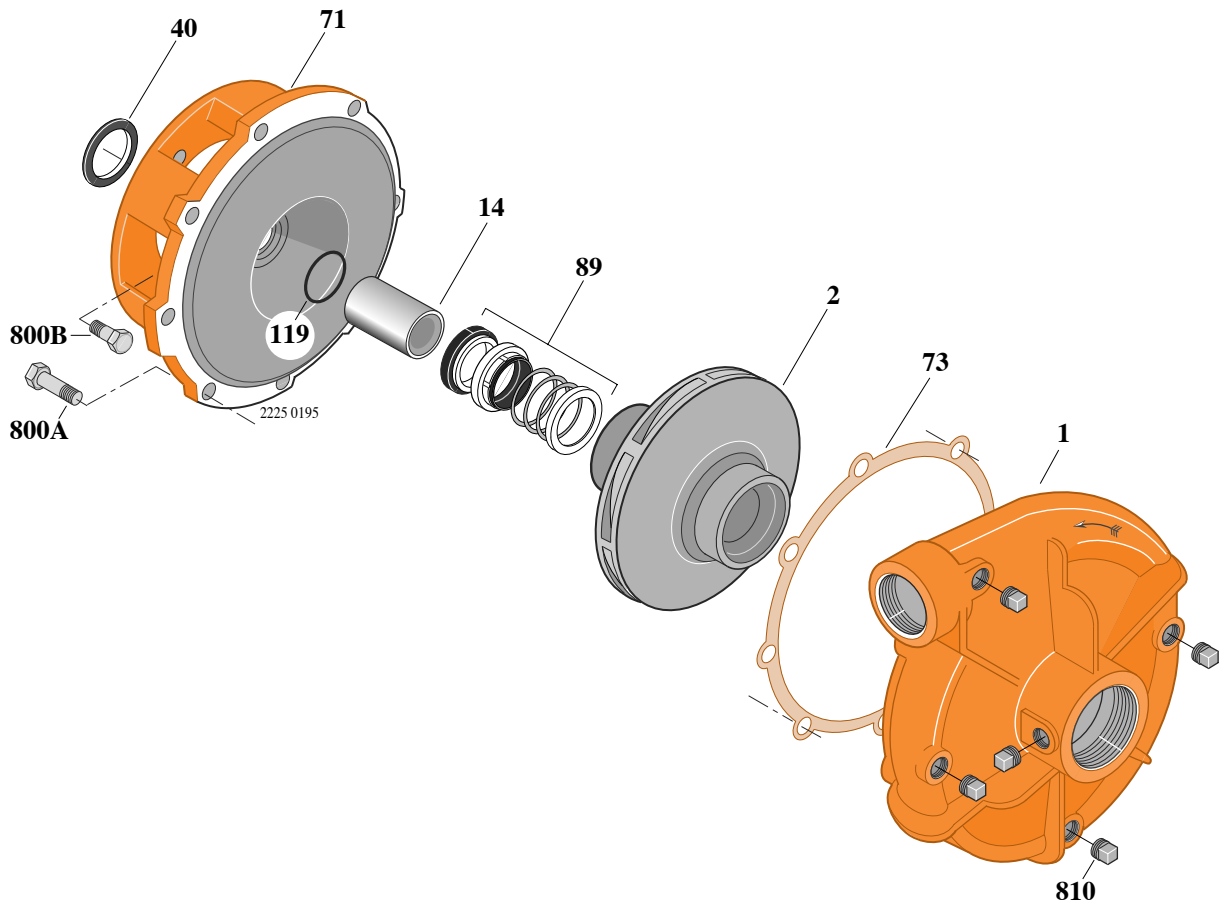
B1-1/2ZQLS-14

Threaded Case (NPT)

Mechanical Seal Construction

TABLE I

B/M No.	HP	Engine Manufacturer	Engine Part No.	Engine Starter	Base Part No.
B71124	14	Robin	H05167	Electric	H05248



Item No.	Part Description	Part Number
1	Case, Volute	L01025
2	Impeller	M10447
14	Sleeve, Shaft	M10726
40	Slinger, Water	S03893
71	Bracket	H05262
73	Gasket	S05126
89	Seal, Mechanical Shaft	S32013
119	O-Ring	M10728
800A	Capscrew, Hex 3/8-16x1" (8 Req.)	S26826
800B	Capscrew, Hex 5/16-24x1-3/8" (4 Req.)	S23562
810	Plug, Pipe 1/4 NPT (5 Req.)	S23715

NOTE: Refer to *Supplement A* for base configuration and mounting hardware.



**TYPE "B" SINGLE STAGE
CENTRIFUGAL PUMP
Air Cooled Engine Drive**

Section	AC
Page	70.1
Date	January 1, 2004
Supersedes 2/1/96	

CAST IRON IMPELLER

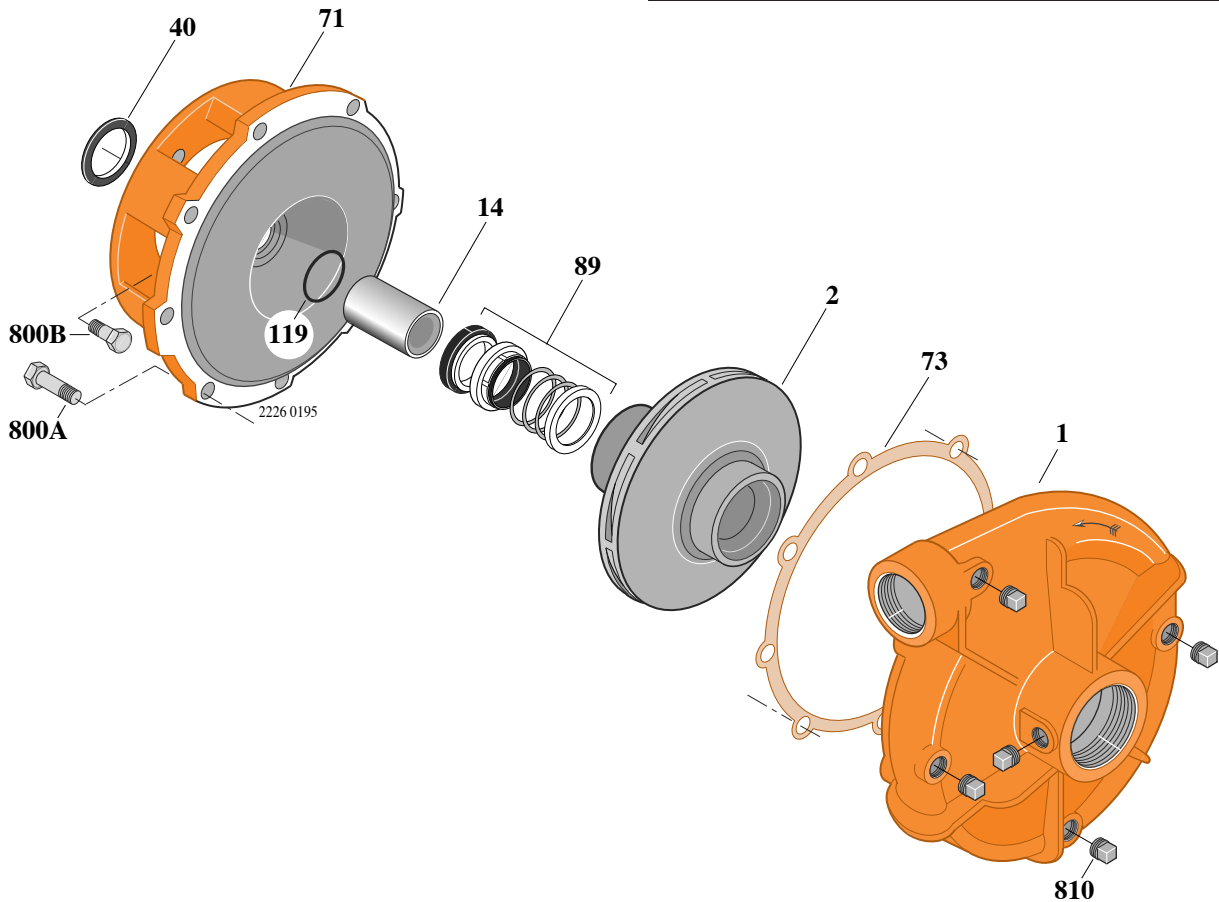
B1-1/2ZQLS-18

Threaded Case (NPT)

Mechanical Seal Construction

TABLE I

B/M No.	HP	Engine Manufacturer	Engine Part No.	Engine Starter	Base Part No.
B70287	18	B & S Vanguard	H05159	Electric	H05248



Item No.	Part Description	Part Number
1	Case, Volute	L01025
2	Impeller	M10315
14	Sleeve, Shaft	M10726
40	Slinger, Water	S03893
71	Bracket	H05262
73	Gasket	S05126
89	Seal, Mechanical Shaft	S32013
119	O-Ring	M10728
800A	Capscrew, Hex 3/8-16x1" (8 Req.)	S26826
800B	Capscrew, Hex 5/16-24x1-1/2" (4 Req.)	S23562
810	Plug, Pipe 1/4 NPT (5 Req.)	S23715

NOTE: Refer to *Supplement A* for base configuration and mounting hardware.



TYPE "B" SINGLE STAGE CENTRIFUGAL PUMP Air Cooled Engine Drive

Section	AC
Page	80.1
Date	January 1, 2004
Supersedes 2/1/96	

CAST IRON IMPELLER

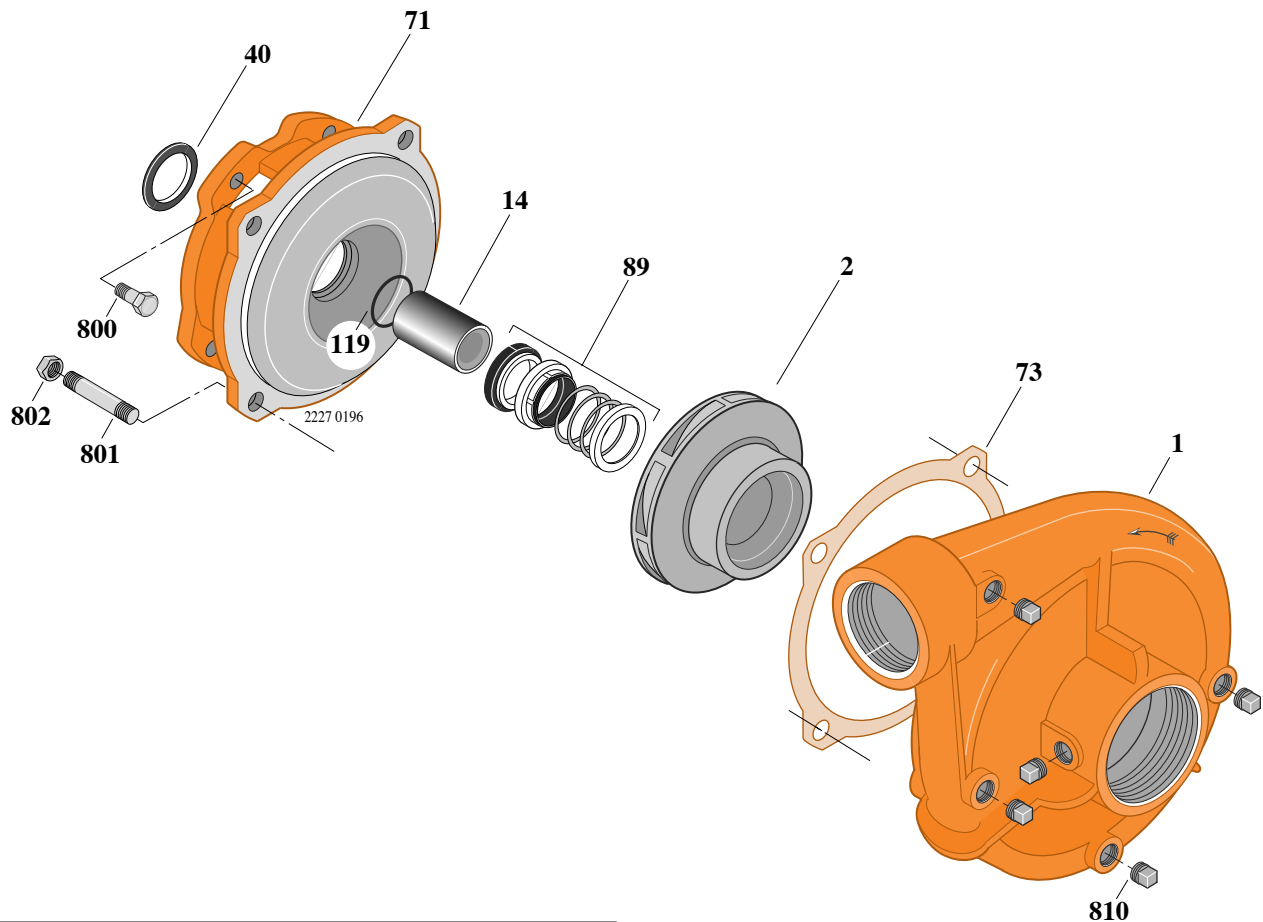
B2TQMS-14

Threaded Case (NPT)

Mechanical Seal Construction

TABLE I

B/M No.	HP	Engine Manufacturer	Engine Part No.	Engine Starter	Base Part No.
B70371	14	Robin	H05167	Electric	H05248



Item No.	Part Description	Part Number
1	Case, Volute	L01022
2	Impeller	M10452
14	Sleeve, Shaft	M10731
40	Slinger, Water	S03893
71	Bracket	L01600
73	Gasket	S04757
89	Seal, Mechanical Shaft	S32014
119	O-Ring	M10728
800	Capscrew, Hex 1/2-13x1" (4 Req.)	S26826
801	Stud, 1/2-13x1-1/2" (4 Req.)	S24043
802	Nut, Hex 1/2-13 (4 Req.)	S23107
810	Plug, Pipe 1/4 NPT (5 Req.)	S23715

NOTE: Refer to *Supplement A* for base configuration and mounting hardware.



**TYPE "B" SINGLE STAGE
CENTRIFUGAL PUMP
Air Cooled Engine Drive**

Section	AC
Page	90.1
Date	January 1, 2004
Supersedes 2/1/96	

CAST IRON IMPELLER

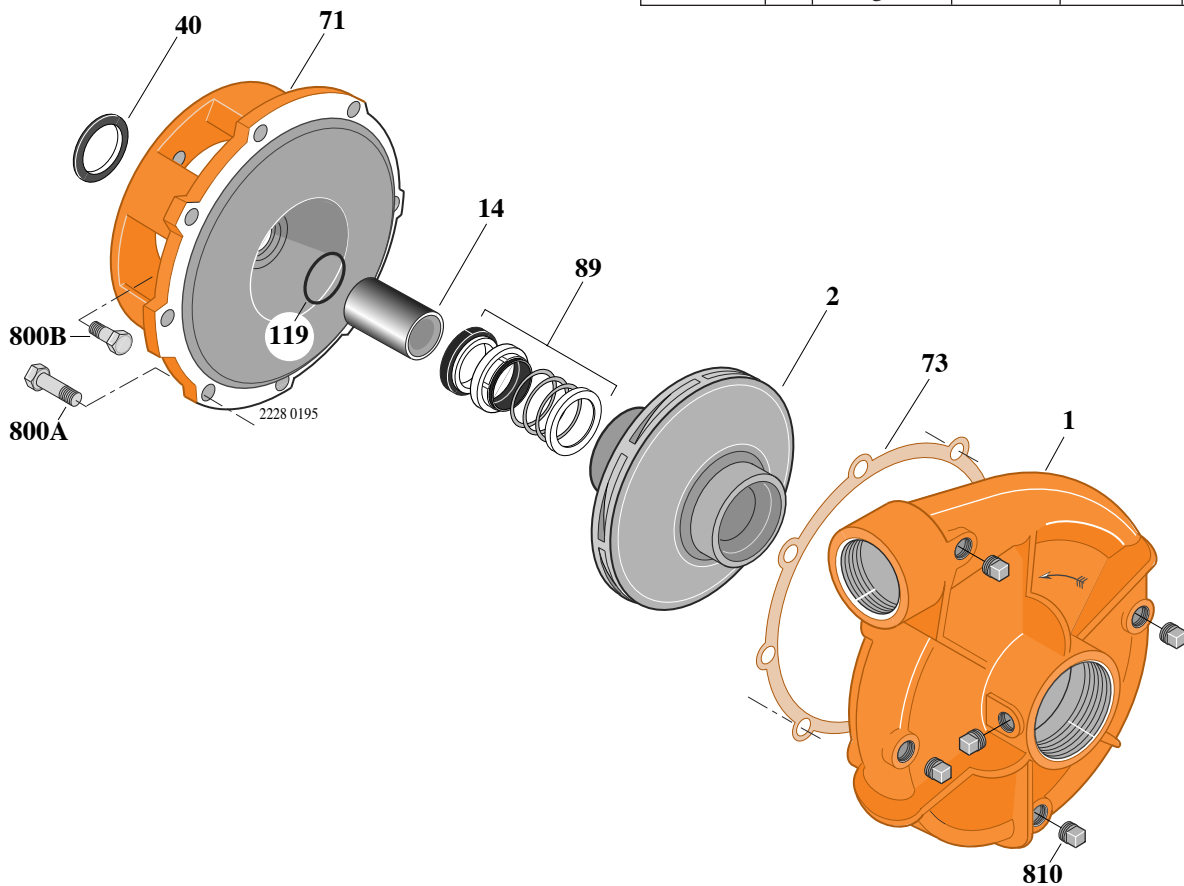
B2ZQLS-18

Threaded Case (NPT)

Mechanical Seal Construction

TABLE I

B/M No.	HP	Engine Manufacturer	Engine Part No.	Engine Starter	Base Part No.
B70368	18	B & S Vanguard	H05159	Electric	S37504



Item No.	Part Description	Part Number
1	Case, Volute	L01026
2	Impeller	L07260
14	Sleeve, Shaft	M10726
40	Slinger, Water	S03893
71	Bracket	H05262
73	Gasket	S05126
89	Seal, Mechanical Shaft	S32013
119	O-Ring	M10728
800A	Capscrew, Hex 3/8-16x7/8" (8 Req.)	S26825
800B	Capscrew, Hex 5/16-24x1-1/2" (4 Req.)	S23562
810	Plug, Pipe 1/4 NPT (5 Req.)	S23715

NOTE: Refer to *Supplement A* for base configuration and mounting hardware.



TYPE "B" SINGLE STAGE CENTRIFUGAL PUMP Air Cooled Engine Drive

Section	AC
Page	110.1
Date	January 1, 2004
Supersedes 2/1/96	

CAST IRON IMPELLER

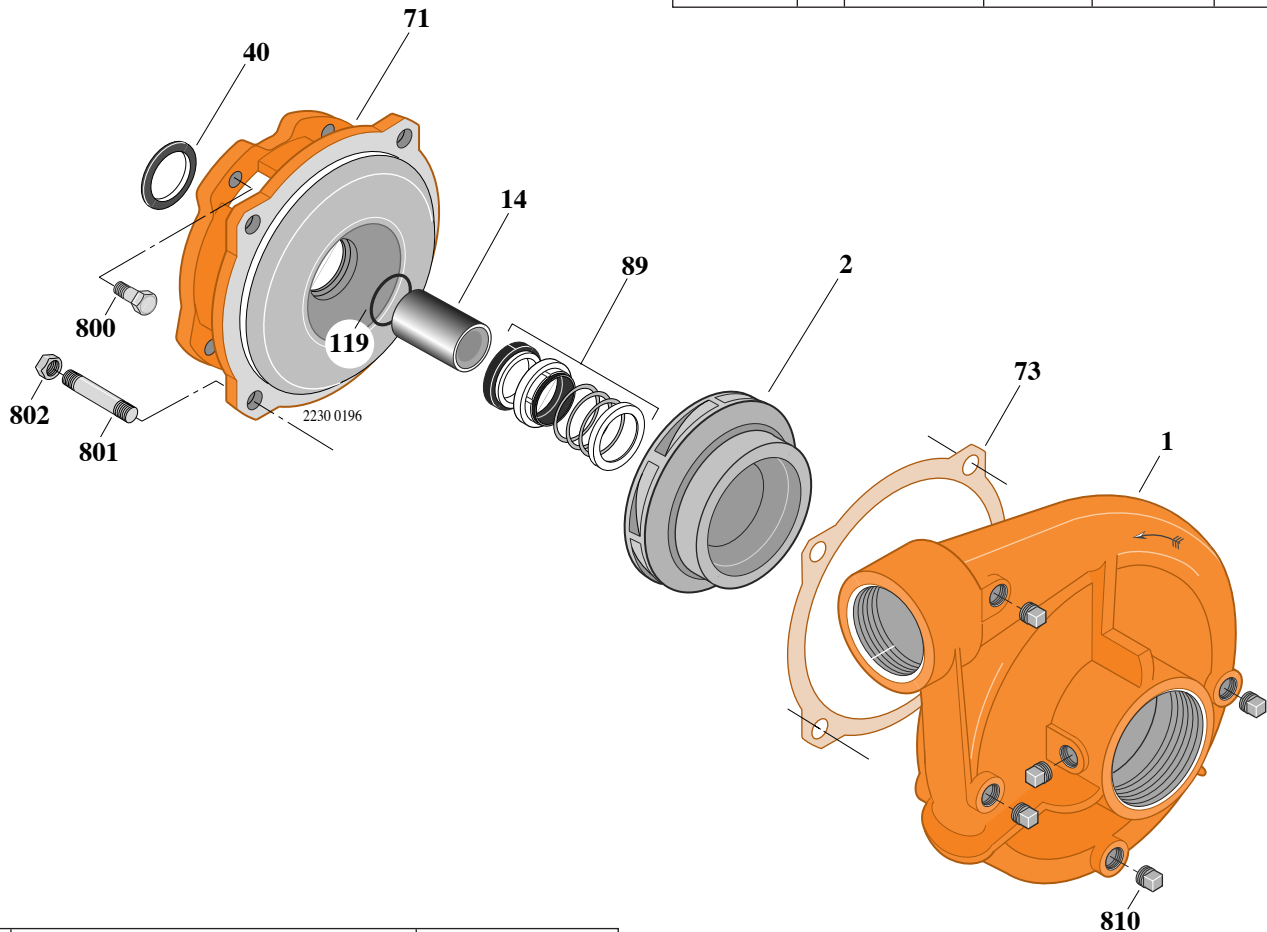
B2-1/2TQMS-14

Threaded Case (NPT)

Mechanical Seal Construction

TABLE I

B/M No.	HP	Engine Manufacturer	Engine Part No.	Engine Starter	Base Part No.
B71685	14	Robin	H05167	Electric	H05248



Item No.	Part Description	Part Number
1	Case, Volute	L01023
2	Impeller	L07628
14	Sleeve, Shaft	M10731
40	Slinger, Water	S03893
71	Bracket	L01600
73	Gasket	S04757
89	Seal, Mechanical Shaft	S32014
119	O-Ring	M10728
800	Capscrew, Hex 1/2-13x1" (4 Req.)	S26826
801	Stud, 1/2-13x1-1/2" (4 Req.)	S23043
802	Nut, Hex 1/2-13 (4 Req.)	S23107
810	Plug, Pipe 1/4 NPT (5 Req.)	S23715

NOTE: Refer to *Supplement A* for base configuration and mounting hardware.



**TYPE "B" SINGLE STAGE
CENTRIFUGAL PUMP
Air Cooled Engine Drive**

Section	AC
Page	130.1
Date	January 1, 2004
Supersedes 2/1/96	

CAST IRON IMPELLER

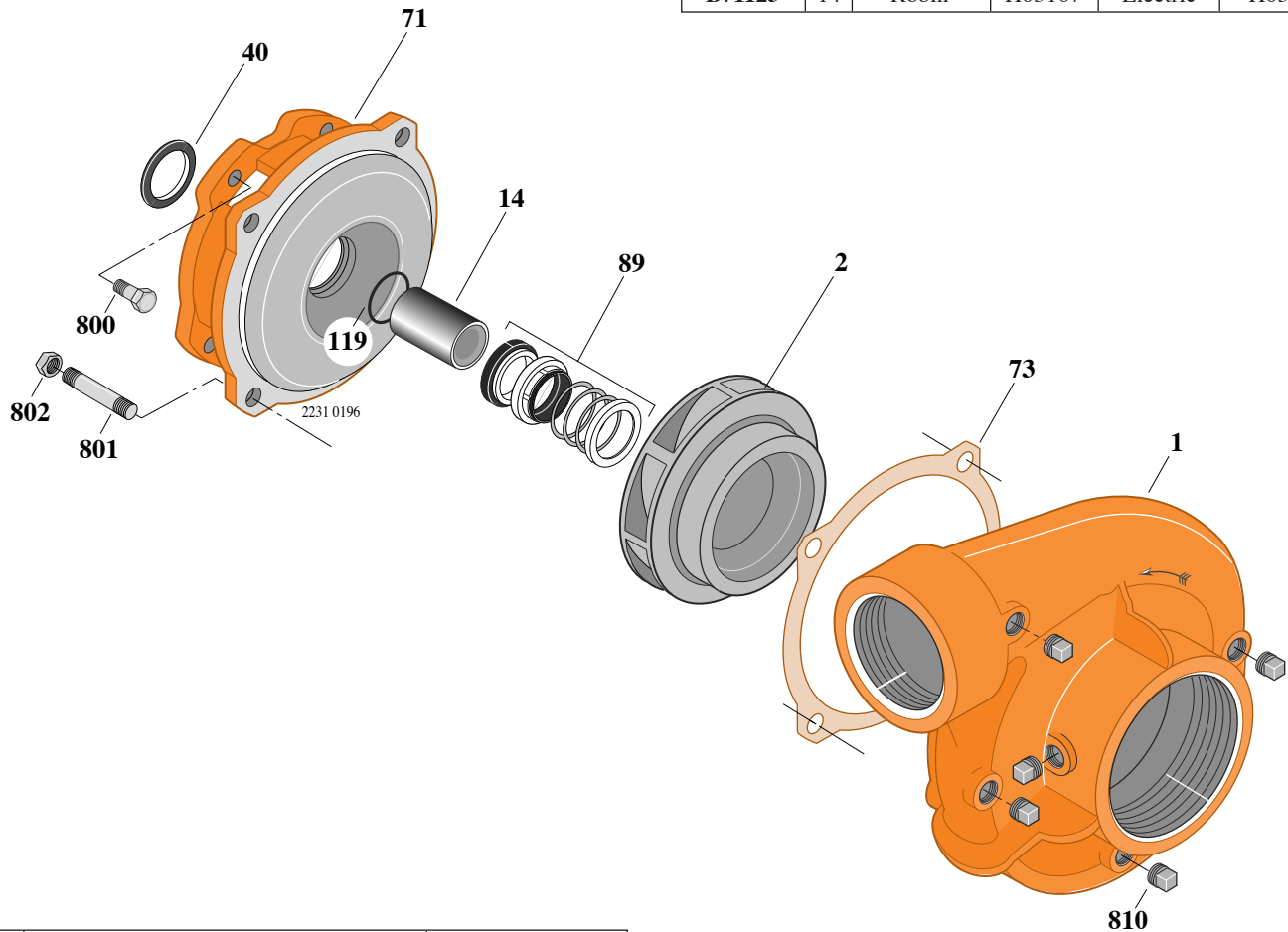
B3TQMS-14

Threaded Case (NPT)

Mechanical Seal Construction

TABLE I

B/M No.	HP	Engine Manufacturer	Engine Part No.	Engine Starter	Base Part No.
B71123	14	Robin	H05167	Electric	H05248



Item No.	Part Description	Part Number
1	Case, Volute	L01104
2	Impeller	M10451
14	Sleeve, Shaft	M10731
40	Slinger, Water	S03893
71	Bracket	L01600
73	Gasket	S04757
89	Seal, Mechanical Shaft	S32014
119	O-Ring	M10728
800	Capscrew, Hex 3/8-16x1" (4 Req.)	S26826
801	Stud, 1/2-13x1-1/2" (4 Req.)	S24043
802	Nut, Hex 1/2-13 (4 Req.)	S23107
810	Plug, Pipe 1/4 NPT (5 Req.)	S23715

NOTE: Refer to *Supplement A* for base configuration and mounting hardware.



TYPE "B" SINGLE STAGE CENTRIFUGAL PUMP Air Cooled Engine Drive

Section	AC
Page	140.1
Date	January 1, 2004
Supersedes 2/1/96	

CAST IRON IMPELLER

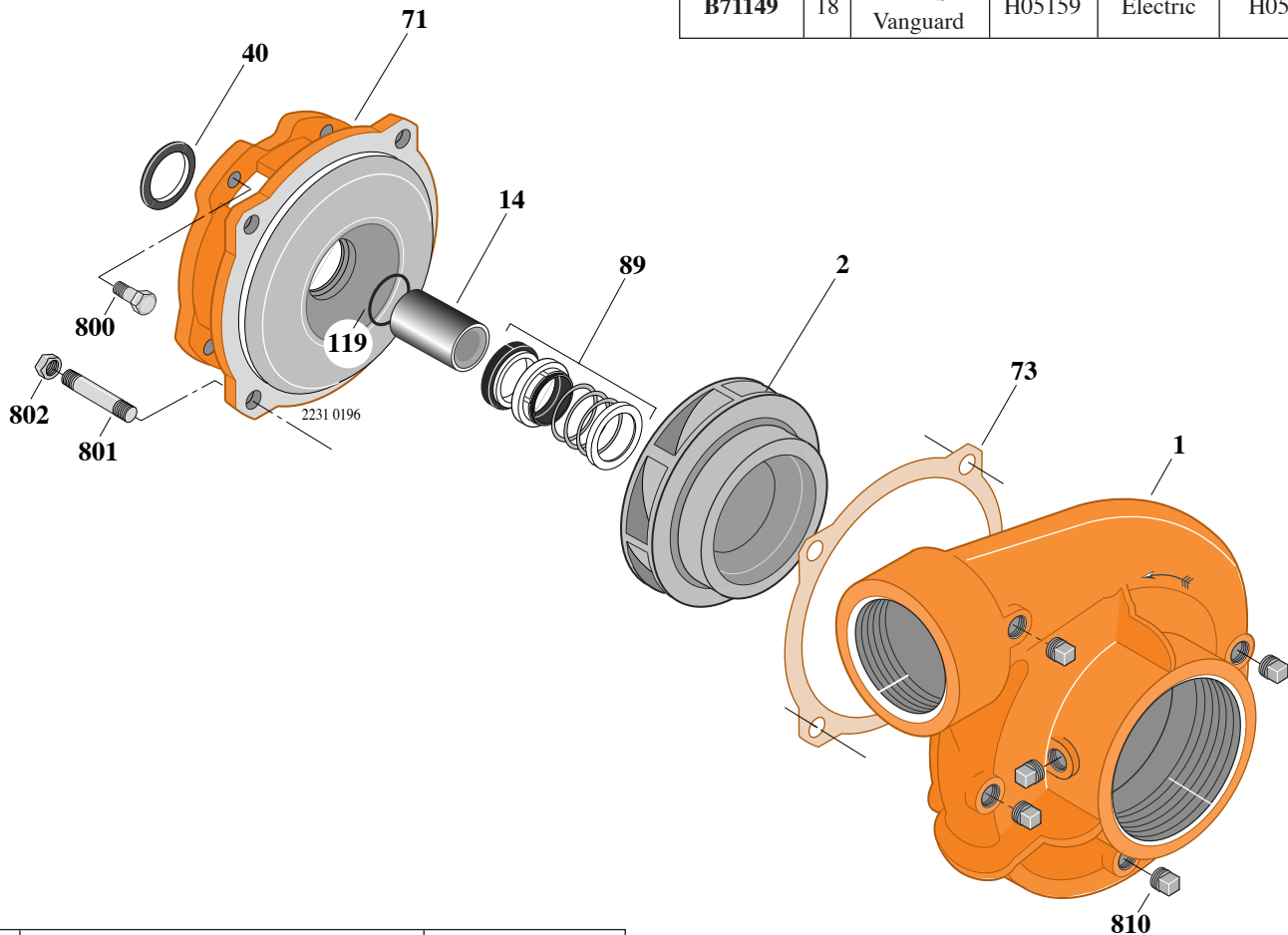
B3TQMS-18

Threaded Case (NPT)

Mechanical Seal Construction

TABLE I

B/M No.	HP	Engine Manufacturer	Engine Part No.	Engine Starter	Base Part No.
B71149	18	B & S Vanguard	H05159	Electric	H05248



Item No.	Part Description	Part Number
1	Case, Volute	L01104
2	Impeller	M10450
14	Sleeve, Shaft	M10731
40	Slinger, Water	S03893
71	Bracket	L01600
73	Gasket	S04757
89	Seal, Mechanical Shaft	S32014
119	O-Ring	M10728
800	Capscrew, Hex 3/8-16x1" (4 Req.)	S26826
801	Stud, 1/2-13x1-1/2" (4 Req.)	S24043
802	Nut, Hex 1/2-13 (4 Req.)	S23107
810	Plug, Pipe 1/4 NPT (5 Req.)	S23715

NOTE: Refer to *Supplement A* for base configuration and mounting hardware.



TYPE "B" SINGLE STAGE CENTRIFUGAL PUMP Air Cooled Engine Drive Self Prime

Section	AC/SP
Page	10.1
Date	January 1, 2004
Supersedes 4/1/96	

ALUMINUM IMPELLER

350-3

Threaded Case (NPT)

Mechanical Seal Construction

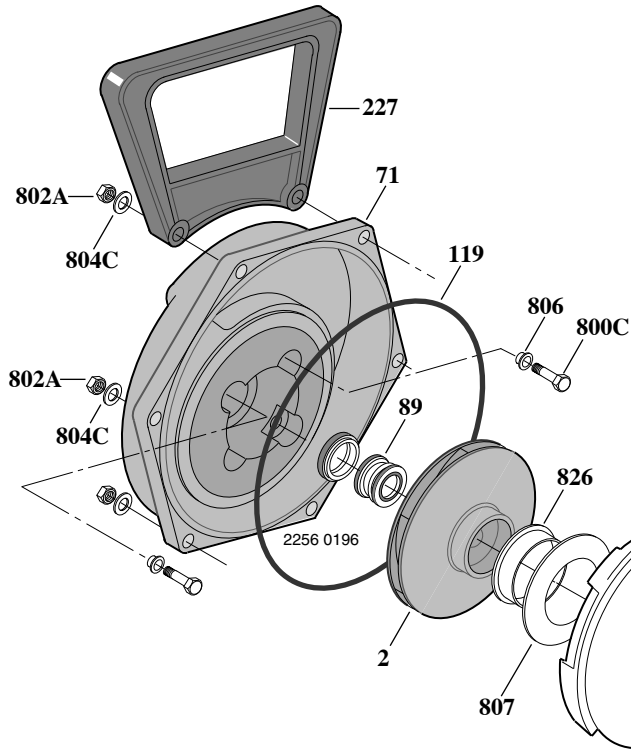
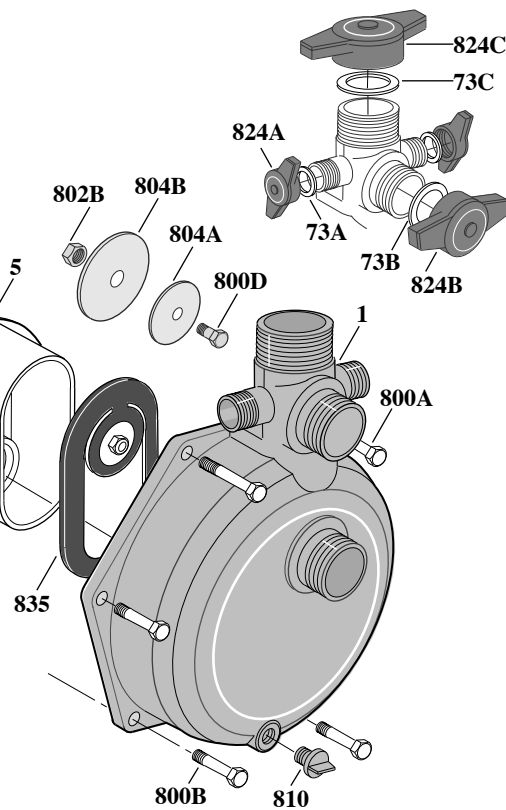


TABLE I

B/M No.	HP	Engine Manufacturer	Engine Part No.	Mounting Type & Part No.
B71901	3	Robin	H05348	Roll Cage – H05445



Item No.	Part Description	Part Number
1	Case, Volute	H05335
2	Impeller	H05349
5	Diffuser	H05352
71	Bracket	H05351
73A	Gasket, 1" (2 Req.)	M10580
73B	Gasket, 1-1/2"	M10621
73C	Gasket, 2"	M10583
89	Seal, Mechanical Shaft	S20791
119	O-Ring	M10584
227	Handle	L07629
800A	Capscrew, Hex 3/8-16x3-1/2" (2 Req.)	M10981
800B	Capscrew, Hex 3/8-16x2" (4 Req.)	S24901
800C	Capscrew, Hex 5/16-24x2" (4 Req.)	M10587
800D	Capscrew, Hex 1/4-20x1/2"	S23508
802A	Nut, Hex 3/8-16 (8 Req.)	S26456
802B	Nut, Hex 1/4-20	S26452
804A	Washer, Clack 1-1/4"	M10585
804B	Washer, Clack 2-5/16"	M10586
804C	Washer, Flat 3/8" (8 Req.)	S27123
806	Seal, Capscrew (4 Req.)	M10582

Item No.	Part Description	Part Number
807	Washer, Wearing	M10612
810	Plug, Drain	U178-920P
824A	Cap, 1" (2 Req.)	M10579
824B	Cap, 1-1/2"	M10620
824C	Cap, 2"	M10581
826	Neckring, Impeller, Floating	M10611
835	Clack, Rubber	L07630

NOTE: Refer to *Supplement B* for roll cage configuration and mounting hardware.



TYPE "B" SINGLE STAGE CENTRIFUGAL PUMP Air Cooled Engine Drive Self Prime

Section	AC/SP
Page	20.1
Date	January 1, 2004
Supersedes 4/1/96	

ALUMINUM IMPELLER

350-4.5

Threaded Case (NPT)

Mechanical Seal Construction

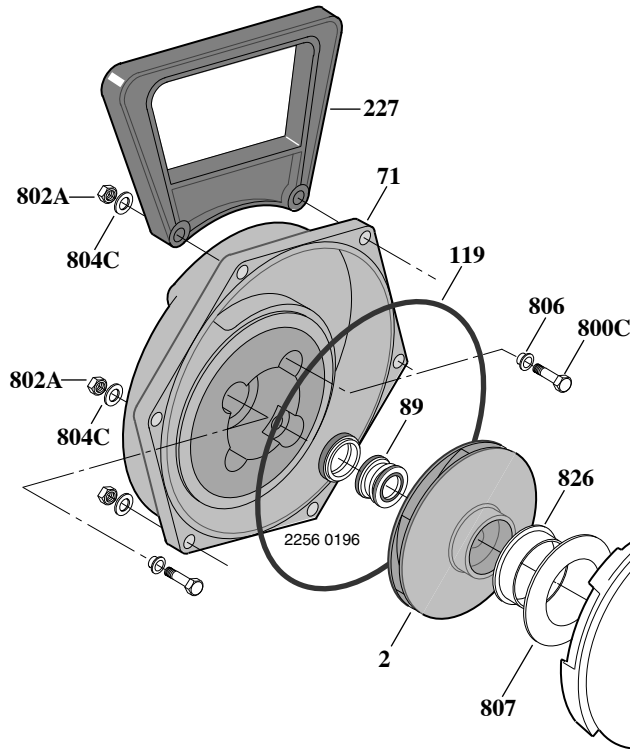
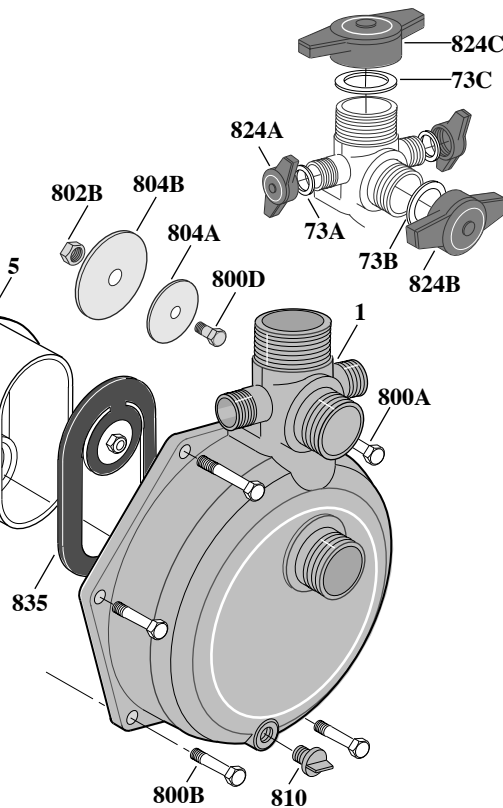


TABLE I

B/M No.	HP	Engine Manufacturer	Engine Part No.	Mounting Type & Part No.
B71901	4.5	Robin	M11741	Roll Cage – H05445



Item No.	Part Description	Part Number
1	Case, Volute	H05335
2	Impeller	H05349
5	Diffuser	H05352
71	Bracket	H05351
73A	Gasket, 1" (2 Req.)	M10580
73B	Gasket, 1-1/2"	M10621
73C	Gasket, 2"	M10583
89	Seal, Mechanical Shaft	S20791
119	O-Ring	M10584
227	Handle	L07629
800A	Capscrew, Hex 3/8-16x3-1/2" (2 Req.)	M10981
800B	Capscrew, Hex 3/8-16x2" (4 Req.)	S24901
800C	Capscrew, Hex 5/16-24x2" (4 Req.)	M10587
800D	Capscrew, Hex 1/4-20x1/2"	S23508
802A	Nut, Hex 3/8-16 (8 Req.)	S26456
802B	Nut, Hex 1/4-20	S26452
804A	Washer, Clack 1-1/4"	M10585
804B	Washer, Clack 2-5/16"	M10586
804C	Washer, Flat 3/8" (8 Req.)	S27123
806	Seal, Capscrew (4 Req.)	M10582

Item No.	Part Description	Part Number
807	Washer, Wearing	M10612
810	Plug, Drain	U178-920P
824A	Cap, 1" (2 Req.)	M10579
824B	Cap, 1-1/2"	M10620
824C	Cap, 2"	M10581
826	Neckring, Impeller, Floating	M10611
835	Clack, Rubber	L07630

NOTE: Refer to *Supplement B* for roll cage configuration and mounting hardware.



TYPE "B" SINGLE STAGE CENTRIFUGAL PUMP Air Cooled Engine Drive Self Prime

Section	AC/SP
Page	30.1
Date	January 1, 2004
Supersedes 4/1/96	

ALUMINUM IMPELLER

550-6

Threaded Case (NPT)

Mechanical Seal Construction

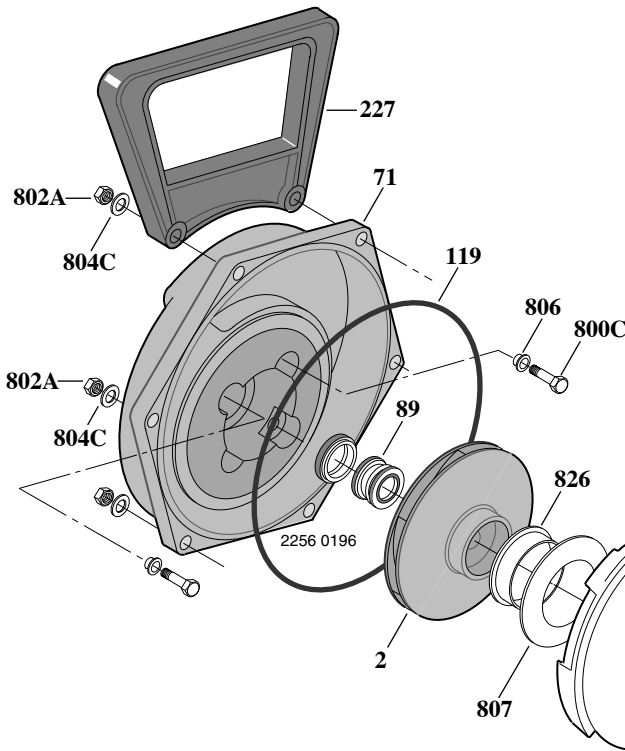
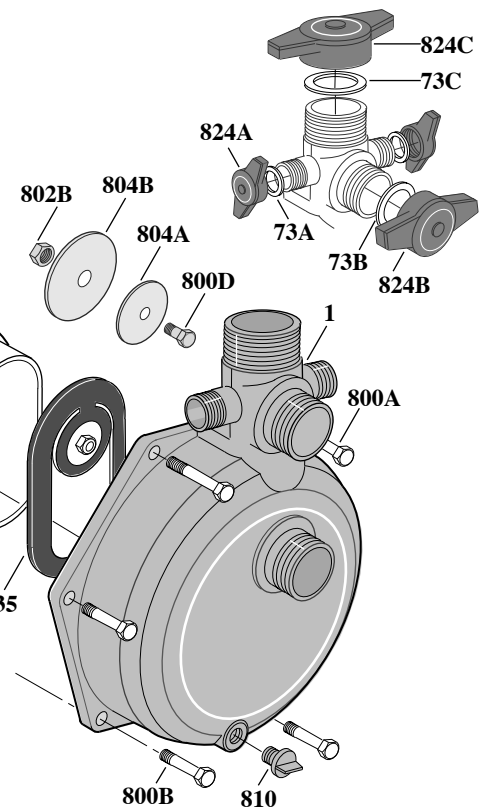


TABLE I

B/M No.	HP	Engine Manufacturer	Engine Part No.	Mounting Type & Part No.
B71904	6	Robin	H05330	Roll Cage – H05445



Item No.	Part Description	Part Number
1	Case, Volute	H05335
2	Impeller	H05350
5	Diffuser	H05352
71	Bracket	H05351
73A	Gasket, 1" (2 Req.)	M10580
73B	Gasket, 1-1/2"	M10621
73C	Gasket, 2"	M10583
89	Seal, Mechanical Shaft	S20791
119	O-Ring	M10584
227	Handle	L07629
800A	Capscrew, Hex 3/8-16x3-1/2" (2 Req.)	M10981
800B	Capscrew, Hex 3/8-16x2" (4 Req.)	S24901
800C	Capscrew, Hex 5/16-24x2" (4 Req.)	M10587
800D	Capscrew, Hex 1/4-20x1/2"	S23508
802A	Nut, Hex 3/8-16 (8 Req.)	S26456
802B	Nut, Hex 1/4-20	S26452
804A	Washer, Clack 1-1/4"	M10585
804B	Washer, Clack 2-5/16"	M10586
804C	Washer, Flat 3/8" (8 Req.)	S27123
806	Seal, Capscrew (4 Req.)	M10582

Item No.	Part Description	Part Number
807	Washer, Wearing	M10612
810	Plug, Drain	U178-920P
824A	Cap, 1" (2 Req.)	M10579
824B	Cap, 1-1/2"	M10620
824C	Cap, 2"	M10581
826	Neckring, Impeller, Floating	M10611
835	Clack, Rubber	L07630

NOTE: Refer to *Supplement B* for roll cage configuration and mounting hardware.



TYPE "B" SINGLE STAGE CENTRIFUGAL PUMP Air Cooled Engine Drive Self Prime

Section	AC/SP
Page	60.1
Date	January 1, 2004
Supersedes 4/1/96	

CAST IRON IMPELLER

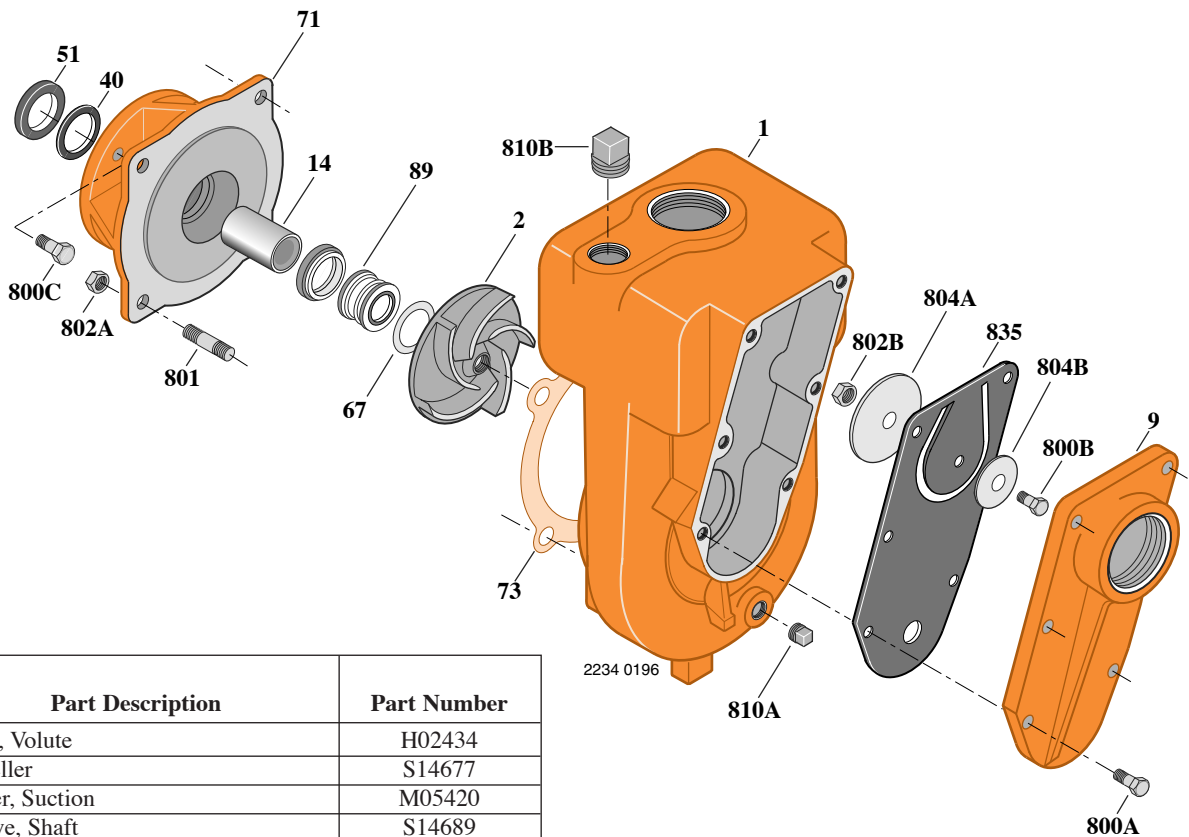
B2XQKLS-4.5

Threaded Case (NPT)

Mechanical Seal Construction

TABLE I

B/M No.	HP	Engine Manufacturer	Engine Part No.	Mounting Type & Part No.
B71907	4.5	Robin	M11741	Roll Cage – H05445



Item No.	Part Description	Part Number
1	Case, Volute	H02434
2	Impeller	S14677
9	Cover, Suction	M05420
14	Sleeve, Shaft	S14689
40	Slinger, Water	S11144
51	Seal, Oil	S13862
67	Shim (.015 Thick) (As Required)	S05067
71	Bracket	M05434
73	Gasket, Case	S04728
89	Seal, Mechanical Shaft	S05646
•227	Handle	M06914
800A	Capscrew, Hex 5/16-18x7/8" (6 Req.)	S26783
800B	Capscrew, Hex 1/4-20x3/8"	S23117
800C	Capscrew, Hex 5/16-24x3/4" (4 Req.)	S23168
801	Stud, 3/8-16x1-1/4" (4 Req.)	S23994
802A	Nut, Hex 3/8-16 (4 Req.)	S23103
802B	Nut, Hex 1/4-20	S23100

Item No.	Part Description	Part Number
804A	Weight, Clack	S14673
804B	Washer, Clack	S14676
810A	Plug, Pipe 1/4" NPT	S14692
810B	Plug, Pipe 1" NPT	S23693
835	Clack, Rubber	M05424

• Not illustrated.

NOTE: Refer to *Supplement B* for base and roll cage configuration and mounting hardware.



TYPE "B" SINGLE STAGE CENTRIFUGAL PUMP Air Cooled Engine Drive Self Prime

Section	AC/SP
Page	70.1
Date	January 1, 2004
Supersedes 4/1/96	

CAST IRON IMPELLER

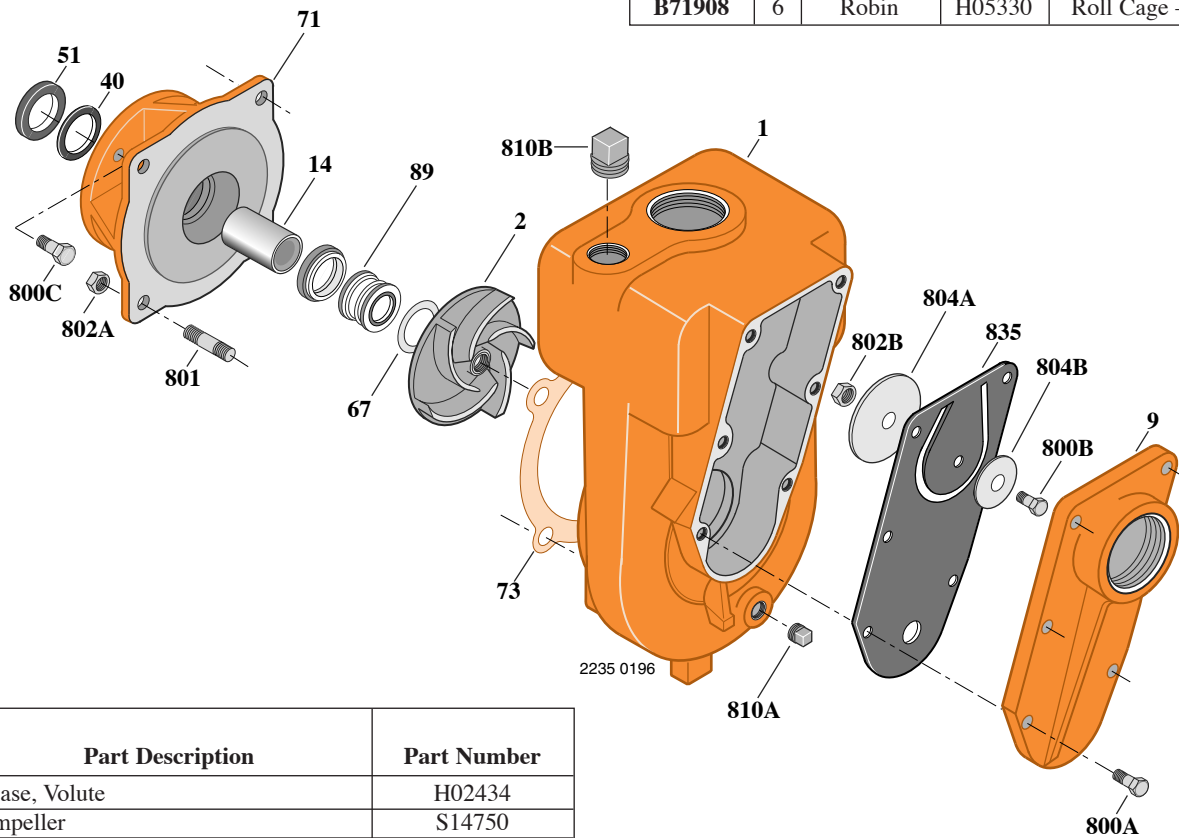
B2XQKHS-6

Threaded Case (NPT)

Mechanical Seal Construction

TABLE I

B/M No.	HP	Engine Manufacturer	Engine Part No.	Mounting Type & Part No.
B71908	6	Robin	H05330	Roll Cage – H05445



Item No.	Part Description	Part Number
1	Case, Volute	H02434
2	Impeller	S14750
9	Cover, Suction	M05420
14	Sleeve, Shaft	S14689
40	Slinger, Water	S11144
51	Seal, Oil	S13862
67	Shim (.015 Thick) (As Required)	S05067
71	Bracket	M05434
73	Gasket, Case	S04728
89	Seal, Mechanical Shaft	S05646
•227	Handle	M06914
800A	Capscrew, Hex 5/16-18x7/8" (6 Req.)	S26783
800B	Capscrew, Hex 1/4-20x3/8"	S23117
800C	Capscrew, Hex 5/16-24x3/4" (4 Req.)	S23168
801	Stud, 3/8-16x1-1/4" (4 Req.)	S23994
802A	Nut, Hex 3/8-16 (4 Req.)	S23103
802B	Nut, Hex 1/4-20	S23100

Item No.	Part Description	Part Number
804A	Weight, Clack	S14673
804B	Washer, Clack	S14676
810A	Plug, Pipe 1/4" NPT	S14692
810B	Plug, Pipe 1" NPT	S23693
835	Clack, Rubber	M05424

• Not illustrated.

NOTE: Refer to *Supplement B* for base and roll cage configuration and mounting hardware.



**TYPE "B" SINGLE STAGE
CENTRIFUGAL PUMP
Air Cooled Engine Drive Self Prime**

Section	AC/SP
Page	100.1
Date	January 1, 2004
Supersedes 4/1/96	

CAST IRON IMPELLER

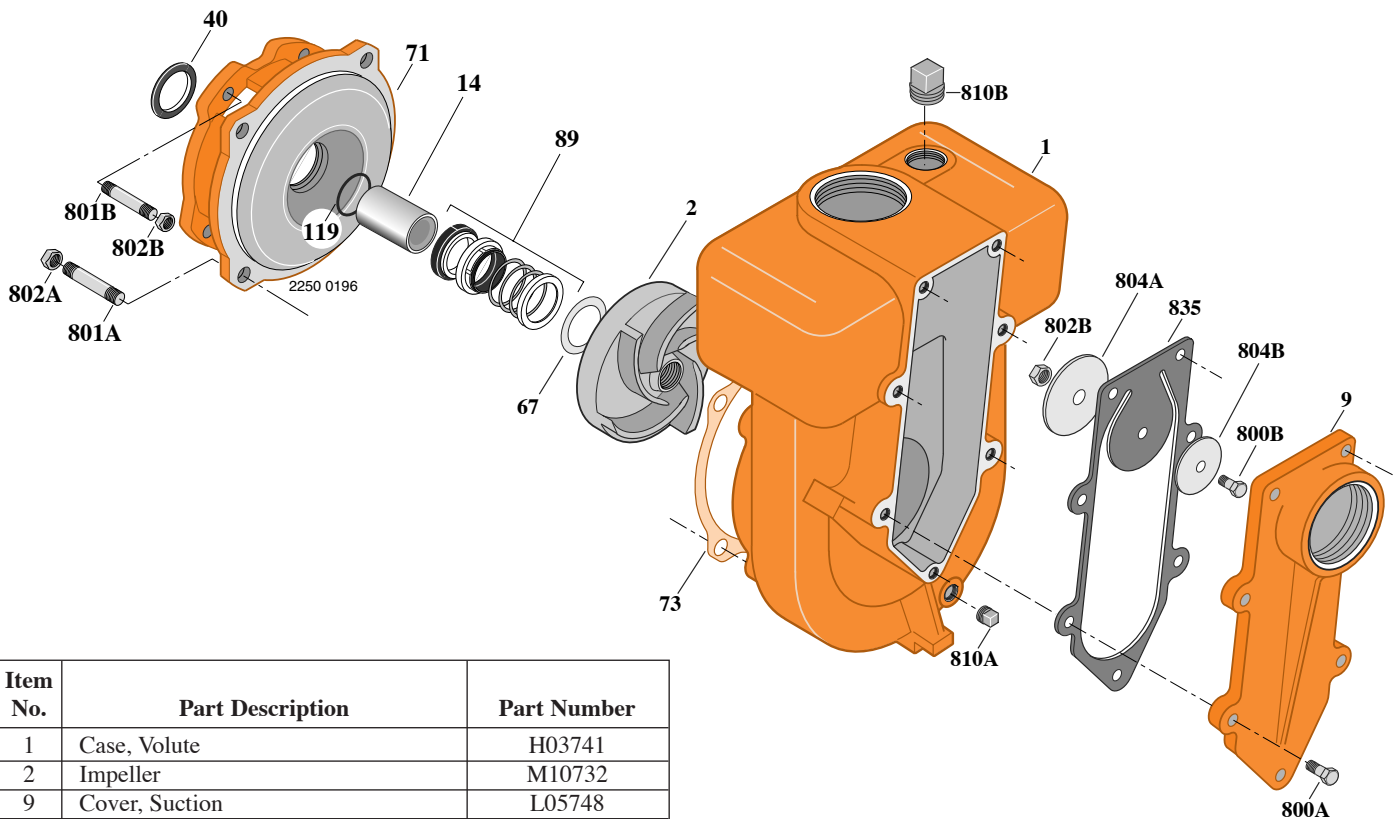
B3TQKLS-9

Threaded Case (NPT)

Mechanical Seal Construction

TABLE I

B/M No.	HP	Engine Manufacturer	Engine Part No.	Mounting Type & Part No.
B72139	9	Robin	M12230	Base – M12393



Item No.	Part Description	Part Number
1	Case, Volute	H03741
2	Impeller	M10732
9	Cover, Suction	L05748
14	Sleeve, Shaft	M10731
40	Slinger, Water	S03893
67	Shim (.015 Thick) (As Required)	S15335
71	Bracket	L01600
73	Gasket, Case (.031 Thick)	S04757
73	Gasket, Case (.051 Thick)	S15049
89	Seal, Mechanical Shaft	S32014
119	O-Ring	M10728
800A	Capscrew, Hex 3/8-16x1-1/4" (7 Req.)	S26828
800B	Capscrew, Hex 3/8-16x3/4"	S26824
801A	Stud, 1/2-13x1-1/2" (4 Req.)	S24043
801B	Stud, 3/8-16x1-1/2" (4 Req.)	S23995
802A	Nut, Hex 1/2-13 (4 Req.)	S23107
802B	Nut, Hex 3/8-16 (5 Req.)	S23103

Item No.	Part Description	Part Number
804A	Weight, Clack	S15325
804B	Washer, Clack	S14843
810A	Plug, Pipe 1/4" NPT	S23715
810B	Plug, Pipe 1-1/4" NPT	S23694
835	Clack, Rubber	L05749

NOTE: Refer to *Supplement A* for base configuration and mounting hardware.



TYPE "B" SINGLE STAGE CENTRIFUGAL PUMP Air Cooled Engine Drive Self Prime

Section	AC/SP
Page	110.1
Date	January 1, 2004
Supersedes 4/1/96	

CAST IRON IMPELLER

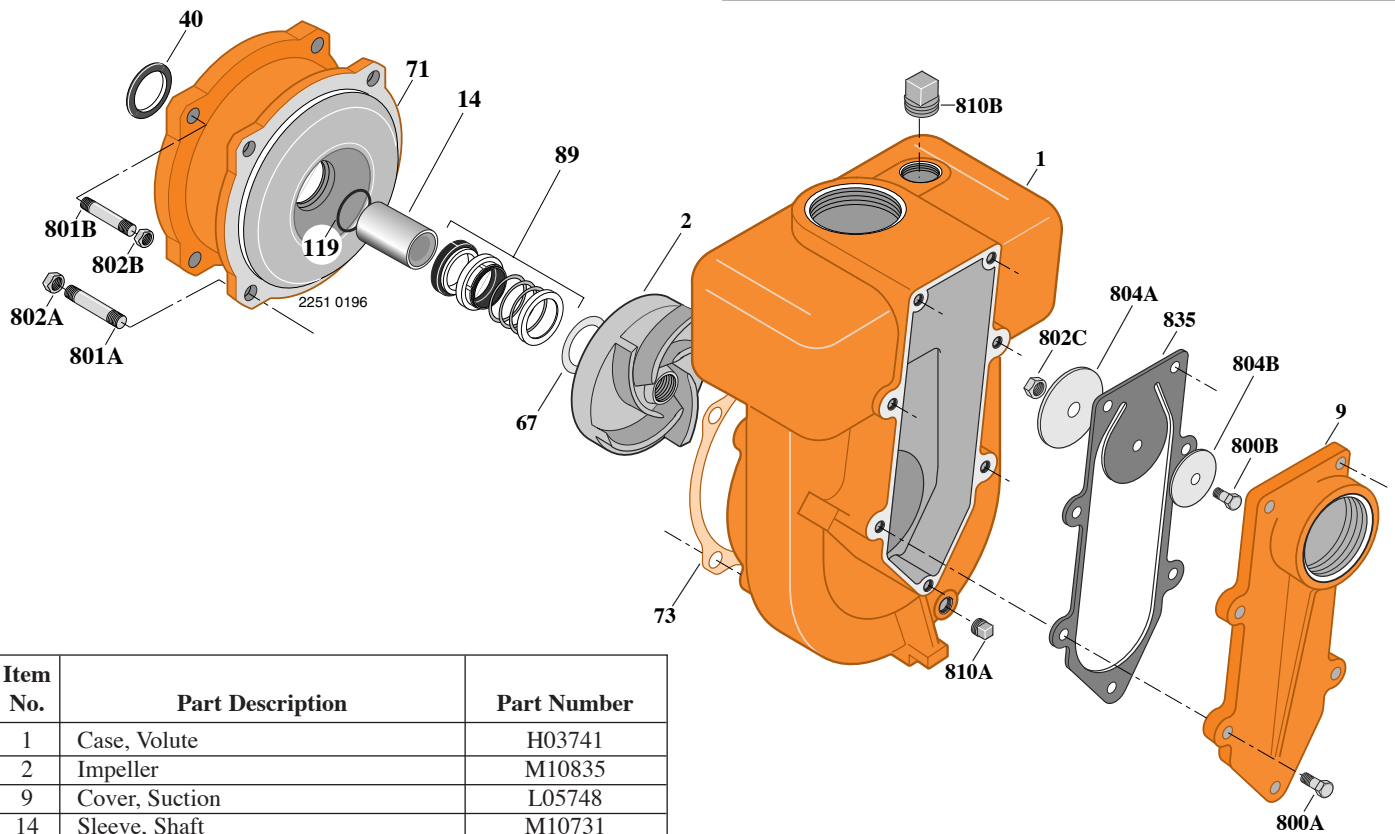
B3TQKLS-11

Threaded Case (NPT)

Mechanical Seal Construction

TABLE I

B/M No.	HP	Engine Manufacturer	Engine Part No.	Mounting Type & Part No.
B72602	11	Robin	H05504	Base - H05766



Item No.	Part Description	Part Number
1	Case, Volute	H03741
2	Impeller	M10835
9	Cover, Suction	L05748
14	Sleeve, Shaft	M10731
40	Slinger, Water	S03893
67	Shim (.015 Thick) (As Required)	S15335
71	Bracket	L01600
73	Gasket, Case (.031 Thick)	S04757
73	Gasket, Case (.051 Thick)	S15049
89	Seal, Mechanical Shaft	S32014
119	O-Ring	M10728
800A	Capscrew, Hex 3/8-16x1-1/4" (7 Req.)	S26828
800B	Capscrew, Hex 3/8-16x3/4"	S26824
801A	Stud, 1/2-13x1-1/2" (4 Req.)	S24043
801B	Stud, 7/16-14x2" (4 Req.)	S24004
802A	Nut, Hex 1/2-13 (4 Req.)	S23107
802B	Nut, Hex 7/16-14 (4 Req.)	S23105
802C	Nut, Hex 3/8-16	S23103

Item No.	Part Description	Part Number
804A	Weight, Clack	S15325
804B	Washer, Clack	S14843
810A	Plug, Pipe 1/4" NPT	S23715
810B	Plug, Pipe 1-1/4" NPT	S23694
835	Clack, Rubber	L05749

NOTE: Refer to *Supplement A* for base configuration and mounting hardware.



TYPE "B" SINGLE STAGE CENTRIFUGAL PUMP Air Cooled Engine Drive Self Prime

Section	AC/SP
Page	110.3
Date	January 1, 2004
Supersedes 9/1/97	

SILICON BRONZE IMPELLER

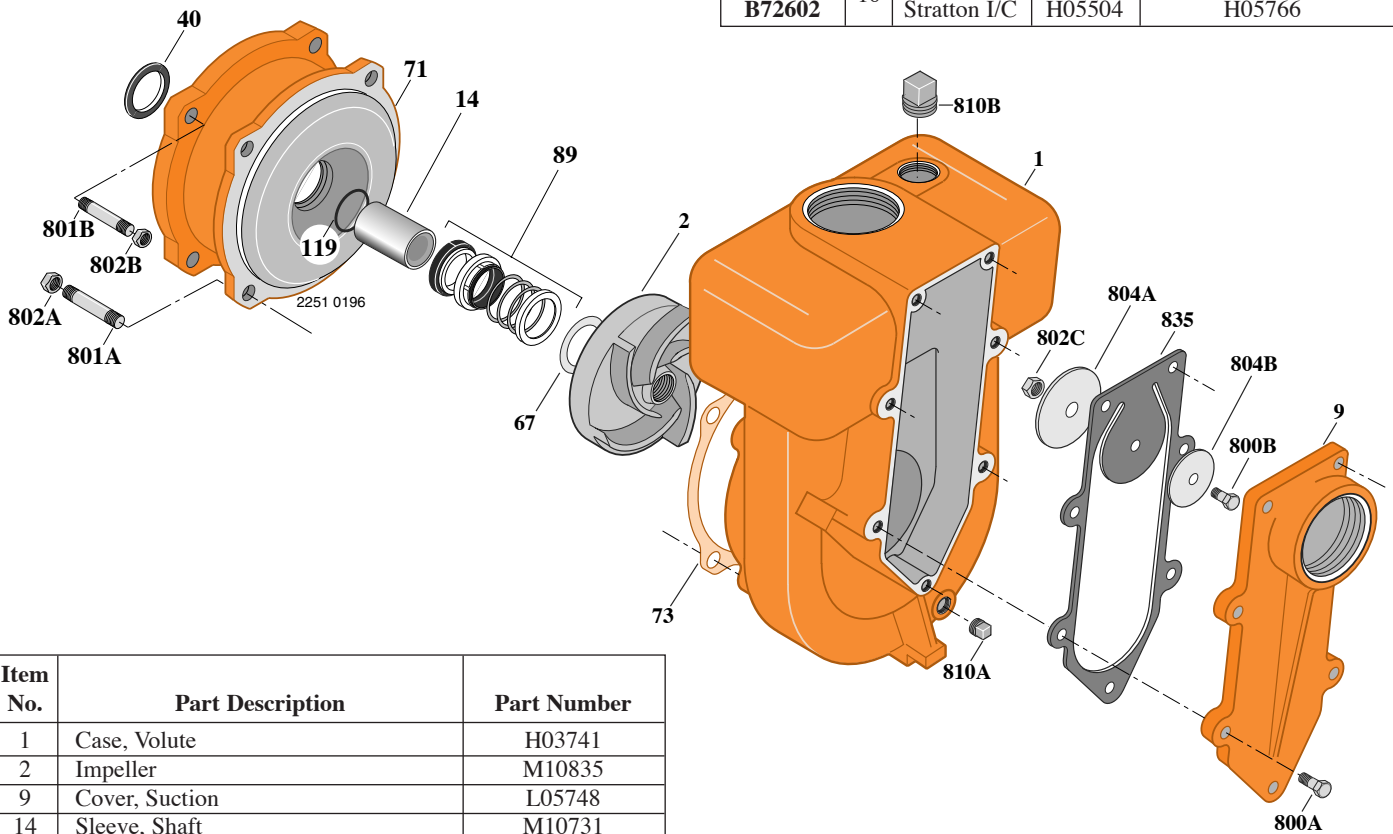
B3TQKLS-10

Threaded Case (NPT)

Mechanical Seal Construction

TABLE I

B/M No.	HP	Engine Manufacturer	Engine Part No.	Mounting Type & Part No.
B72601	10	Briggs & Stratton I/C	H05503	Base
B72602			H05504	H05766



Item No.	Part Description	Part Number
1	Case, Volute	H03741
2	Impeller	M10835
9	Cover, Suction	L05748
14	Sleeve, Shaft	M10731
40	Slinger, Water	S03893
67	Shim (.015 Thick) (As Required)	S15335
71	Bracket	L01600
73	Gasket, Case (.031 Thick)	S04757
73	Gasket, Case (.051 Thick)	S15049
89	Seal, Mechanical Shaft	S32014
119	O-Ring	M10728
800A	Capscrew, Hex 3/8-16x1-1/4" (7 Req.)	S26828
800B	Capscrew, Hex 3/8-16x3/4"	S26824
801A	Stud, 1/2-13x1-1/2" (4 Req.)	S24043
801B	Stud, 7/16-14x2" (4 Req.)	S24004
802A	Nut, Hex 1/2-13 (4 Req.)	S23107
802B	Nut, Hex 7/16-14 (4 Req.)	S23105
802C	Nut, Hex 3/8-16	S23103

Item No.	Part Description	Part Number
804A	Weight, Clack	S15325
804B	Washer, Clack	S14843
810A	Plug, Pipe 1/4" NPT	S23715
810B	Plug, Pipe 1-1/4" NPT	S23694
835	Clack, Rubber	L05749

NOTE: Refer to *Supplement A* for base configuration and mounting hardware.



**TYPE "B" SINGLE STAGE
CENTRIFUGAL PUMP
Air Cooled Engine Drive Self Prime**

Section	AC/SP
Page	110.4
Date	January 1, 2004
Supersedes 9/1/97	

SILICON BRONZE IMPELLER

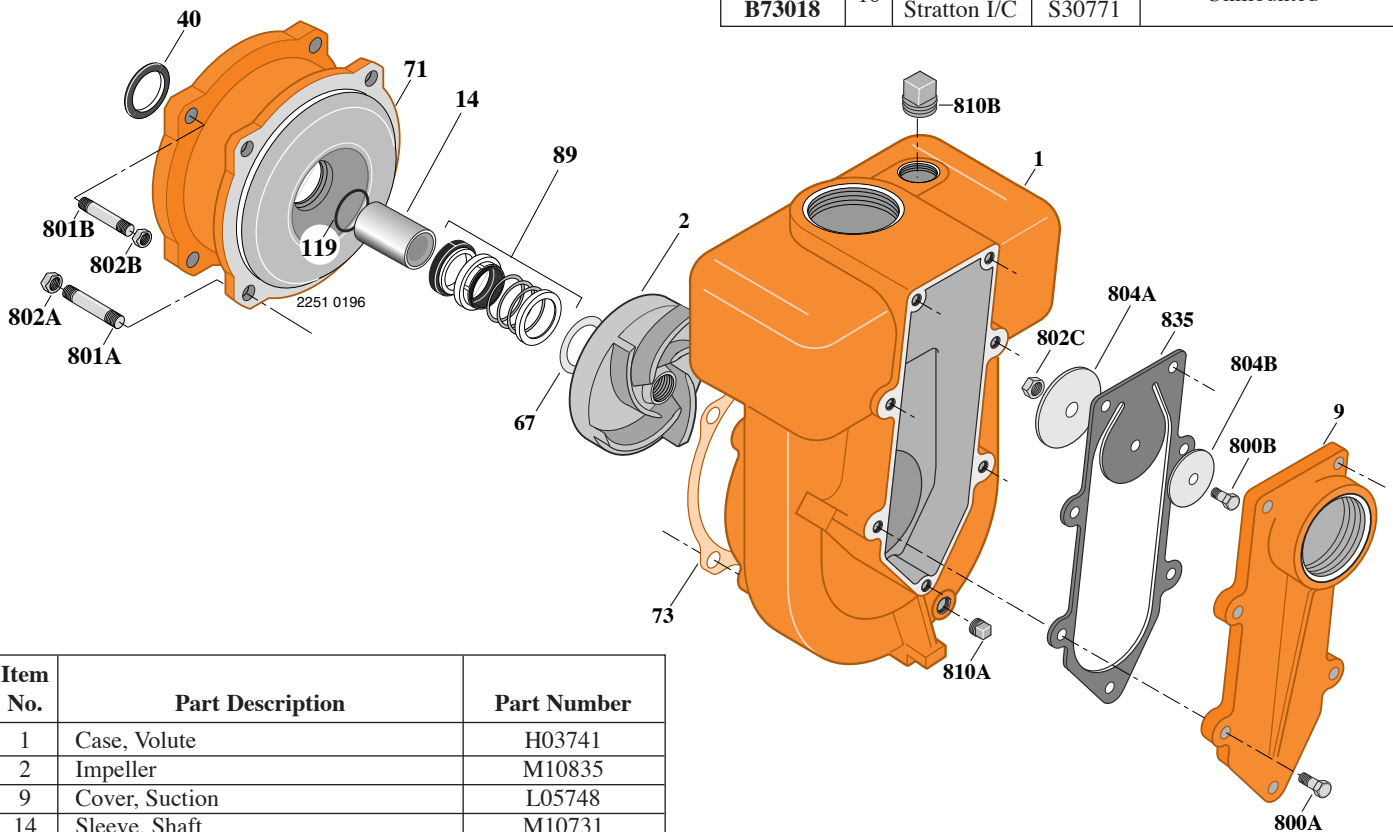
B3TQKLS-10

Threaded Case (NPT)

Mechanical Seal Construction

TABLE I

B/M No.	HP	Engine Manufacturer	Engine Part No.	Mounting Type & Part No.
B73017	10	Briggs & Stratton I/C	H05503	Unmounted
B73018			S30771	



Item No.	Part Description	Part Number
1	Case, Volute	H03741
2	Impeller	M10835
9	Cover, Suction	L05748
14	Sleeve, Shaft	M10731
40	Slinger, Water	S03893
67	Shim (.015 Thick) (As Required)	S15335
71	Bracket	L01600
73	Gasket, Case (.031 Thick)	S04757
73	Gasket, Case (.051 Thick)	S15049
89	Seal, Mechanical Shaft	S32014
119	O-Ring	M10728
800A	Capscrew, Hex 3/8-16x1-1/4" (7 Req.)	S26828
800B	Capscrew, Hex 3/8-16x3/4"	S26824
801A	Stud, 1/2-13x1-1/2" (4 Req.)	S24043
801B	Stud, 7/16-14x2" (4 Req.)	S24004
802A	Nut, Hex 1/2-13 (4 Req.)	S23107
802B	Nut, Hex 7/16-14 (4 Req.)	S23105
802C	Nut, Hex 3/8-16	S23103

Item No.	Part Description	Part Number
804A	Weight, Clack	S15325
804B	Washer, Clack	S14843
810A	Plug, Pipe 1/4" NPT	S23715
810B	Plug, Pipe 1-1/4" NPT	S23694
835	Clack, Rubber	L05749

NOTE: Refer to *Supplement A* for base configuration and mounting hardware.



**TYPE "B" SINGLE STAGE
CENTRIFUGAL PUMP
Air Cooled Engine Drive Self Prime**

Section	AC/SP
Page	120.1
Date	January 1, 2004
Supersedes 4/1/96	

CAST IRON IMPELLER

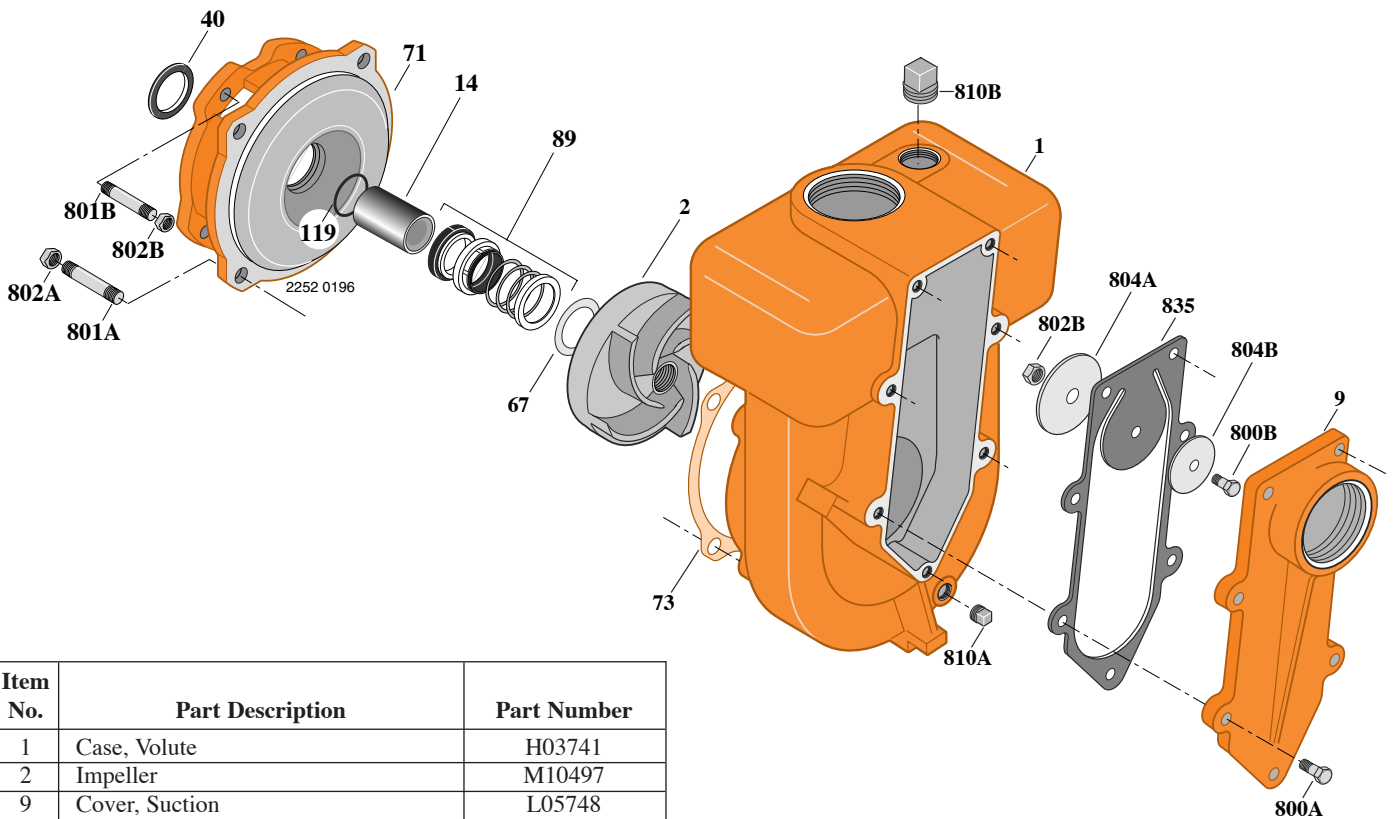
B3TQKHS-14

Threaded Case (NPT)

Mechanical Seal Construction

TABLE I

B/M No.	HP	Engine Manufacturer	Engine Part No.	Mounting Type & Part No.
B71543	14	Robin	H05167	Base – H05248



Item No.	Part Description	Part Number
1	Case, Volute	H03741
2	Impeller	M10497
9	Cover, Suction	L05748
14	Sleeve, Shaft	M10731
40	Slinger, Water	S03893
67	Shim (.015 Thick) (As Required)	S15335
71	Bracket	H05263
73	Gasket, Case (.031 Thick)	S04757
73	Gasket, Case (.051 Thick)	S15049
89	Seal, Mechanical Shaft	S32014
119	O-Ring	M10728
800A	Capscrew, Hex 3/8-16x1-1/4" (7 Req.)	S26828
800B	Capscrew, Hex 3/8-16x3/4"	S26824
801A	Stud, 1/2-13x1-1/2" (4 Req.)	S24043
801B	Stud, 3/8-16x1-1/2" (4 Req.)	S23995
802A	Nut, Hex 1/2-13 (4 Req.)	S23107
802B	Nut, Hex 3/8-16 (5 Req.)	S23103

Item No.	Part Description	Part Number
804A	Weight, Clack	S15325
804B	Washer, Clack	S14843
810A	Plug, Pipe 1/4" NPT	S23715
810B	Plug, Pipe 1-1/4" NPT	S23694
835	Clack, Rubber	L05749

NOTE: Refer to *Supplement A* for base configuration and mounting hardware.



TYPE "B" SINGLE STAGE CENTRIFUGAL PUMP Air Cooled Engine Drive Self Prime

Section	AC/SP
Page	130.1
Date	January 1, 2004
Supersedes 4/1/96	

CAST IRON IMPELLER

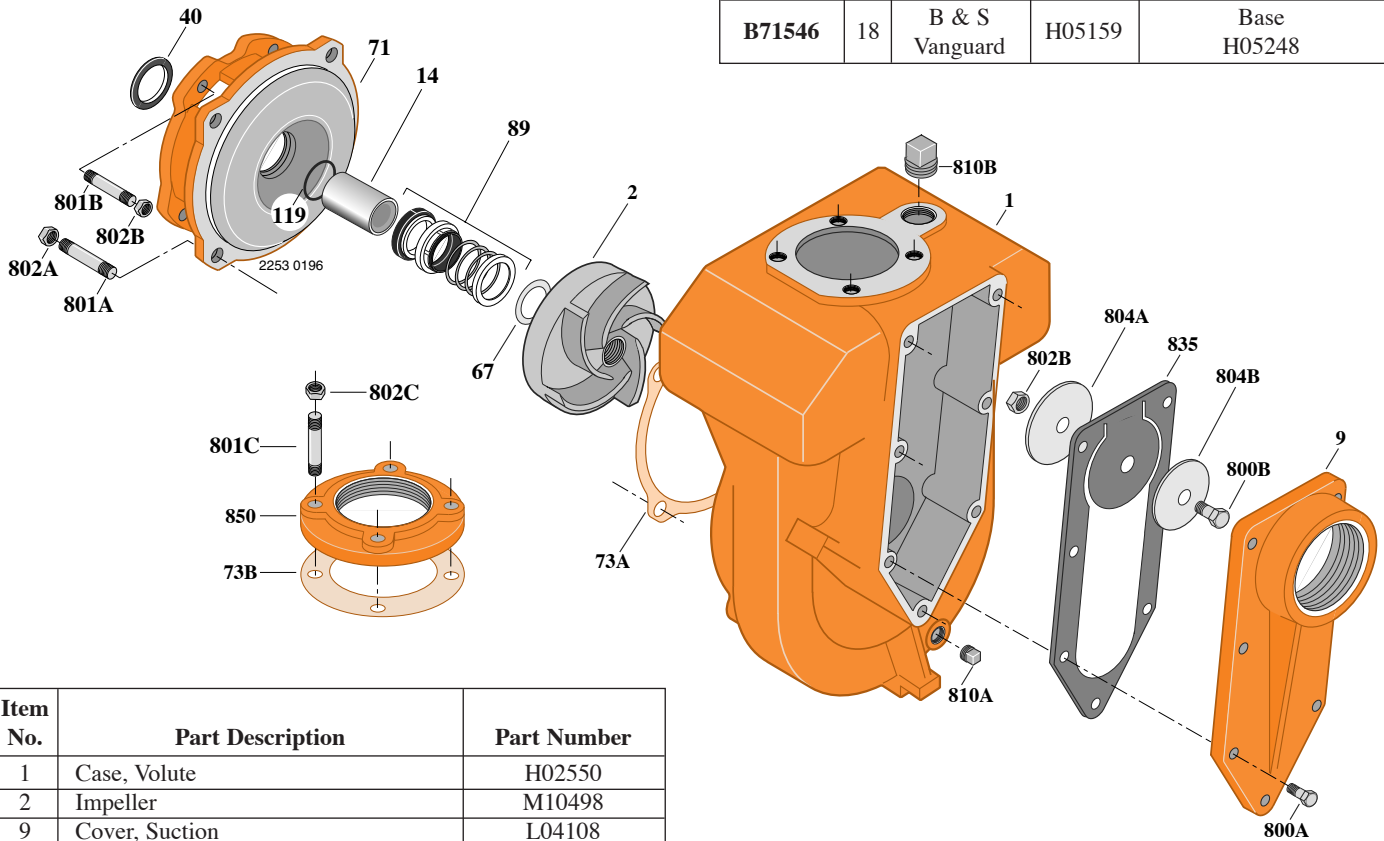
B4TQKLS-18

Threaded Case (NPT)

Mechanical Seal Construction

TABLE I

B/M No.	HP	Engine Manufacturer	Engine Part No.	Mounting Type & Part No.
B71546	18	B & S Vanguard	H05159	Base H05248



Item No.	Part Description	Part Number
1	Case, Volute	H02550
2	Impeller	M10498
9	Cover, Suction	L04108
14	Sleeve, Shaft	M10731
40	Slinger, Water	S03893
67	Shim (.015 Thick) (As Required)	S15335
71	Bracket	H05263
73A	Gasket, Case (.031 Thick)	S04757
73A	Gasket, Case (.051 Thick)	S15049
73B	Gasket, Companion Flange	S10364
89	Seal, Mechanical Shaft	S32014
119	O-Ring	M10728
800A	Capscrew, Hex 3/8-16x1-1/4" (7 Req.)	S26828
800B	Capscrew, Hex 3/8-16x3/4"	S26824
801A	Stud, 1/2-13x1-1/2" (4 Req.)	S24043
801B	Stud, 3/8-16x1-1/2" (4 Req.)	S23995
801C	Stud, 5/8-11x2-1/2" (4 Req.)	S24062
802A	Nut, Hex 1/2-13 (4 Req.)	S23107

Item No.	Part Description	Part Number
802B	Nut, Hex 3/8-20 (5 Req.)	S23103
802C	Nut, Hex 5/8-11 (4 Req.)	S23109
804A	Weight, Clack	S14842
804B	Washer, Clack	S15325
810A	Plug, Pipe 1/4" NPT	S23717
810B	Plug, Pipe 1-1/4" NPT	S23694
835	Clack, Rubber	L04119
850	Flange, Companion	S15933

NOTE: Refer to *Supplement A* for base configuration and mounting hardware.